



DocumentsCorePack Installation Guide for MS Dynamics 365

April 2025

Table of Contents

PREAMBLE	4
TARGET AUDIENCE	4
SUPPORTED WEB BROWSERS AND VERSIONS	4
1. HOW TO INSTALL THE DOCUMENTSCOREPACK	5
1.1. PREREQUISITES	5
1.2. INSTALL DIRECTLY ON A DYNAMICS 365 ON-PREMISE SERVER	5
2. INSTALLATION OF THE DOCUMENTSCOREPACK SERVER.....	7
2.1. ONLINE SERVICE CONFIGURATION	7
2.2. INSTALLATION	7
2.3. END USER LICENSE AGREEMENT (EULA).....	9
2.4. CONFIRM THE INSTALLATION	9
2.5. INSTALL THE WINDOWS IDENTIFY FOUNDATION	11
2.6. CONFIGURE DYNAMICS 365 SERVER.....	13
2.7. SECURITY ROLES.....	14
2.8. FINISH THE INSTALLATION	17
2.9. ORGANIZATION OVERVIEW	18
2.10. ORGANIZATION OVERVIEW – FUNCTION BUTTONS.....	19
2.11. CLIENT & SERVER BASED GENERATION SETTINGS.....	20
1.3. THE COMMAND BAR TAB	21
2.12.1. DocumentsCorePack Template Designer (Client Based) document generation	22
2.12.2. Server Based document generation.....	26
2.12.3. Command bar Configuration	27
1.4. THE GENERAL SETTING TAB	27
1.5. THE SHAREPOINT TAB.....	30
1.6. SERVICE CONFIGURATION	32
2.15.1 The General tab.....	32
2.15.2. The Dynamics 365 Connection Setup tab.....	33
2.15.3. The SharePoint tab.....	34
2.15.4. The License tab.....	35
2.15.5. The Log tab.....	36
2.15.6. The Printer tab.....	37
2.15.7. Create a Load Balancing service.....	38
1.7. LICENSING.....	41
1.8. UPGRADE	41
3. HOW TO INSTALL DOCUMENTSCOREPACK IN AN IFD/CLAIMS-BASED ENVIRONMENT	42
4. TROUBLESHOOTING	47
5. WINDOWS 12 WIF FRAMEWORK INSTALLATION (WINDOWSIDENTITYFOUNDATION)	48
6. DOCUMENTSCOREPACK TEMPLATES.....	51
1.9. HOW TO CREATE DOCUMENTSCOREPACK TEMPLATES.....	51
1.10. IMPORT/EXPORT EXISTING DOCUMENTSCOREPACK TEMPLATES	51
7. LANGUAGE SETTINGS FOR DOCUMENTSCOREPACK	55
1.11. LANGUAGE SETTINGS IN DOCUMENTSCOREPACK TEMPLATE DESIGNER	55
7.1.1. Location of the Language Settings in the DocumentsCorePack Template Designer	55
7.1.2. Modify the UI on the DocumentsCorePack Template Designer	56
7.1.3. How to translate a language file	57
1.12. LANGUAGE SETTINGS IN DYNAMICS 365	57

7.1.4.	Location of the Language Settings in Dynamics 365.....	57
7.1.5.	Location of the Language Settings in Dynamics 365.....	58
7.2.3.	How to translate a language file.....	58
8.	IMPORTANT INFORMATION	59
9.	UNINSTALL DOCUMENTSCOREPACK SERVER COMPONENT	60
10.	LIST OF FIGURES	62
11.	CONTACT	63

Preamble

This documentation is intended to guide you through the Installation of DocumentsCorePack in Microsoft Dynamics 365.

Please read this document carefully and follow the steps as described to achieve the described results.

Target Audience

This guide is intended for users installing DocumentsCorePack for Microsoft Dynamics 365 with the following basic skills:

- Basic Microsoft Dynamics 365 Knowledge
- Maintaining and configuring a Microsoft CRM Organization

Supported Web Browsers and versions

Supported Web Browsers:

- Internet Explorer 10 and higher
- Chrome
- Edge
- Firefox

One of the following versions of Microsoft Dynamics CRM must be available:

- Microsoft Dynamics 365
- Microsoft Dynamics CRM Online

1. How to install the DocumentsCorePack

You can install DocumentsCorePack on any supported operating system which is able to connect to your Dynamics 365 server. During the installation, you have to specify at least one organization where the DocumentsCorePack will be installed.

Additional organizations can be set up by the installation manager after the original setup has finished.

1.1. Prerequisites

Before you start the installation, you have to download the DocumentsCorePack Application. You can download files [here](#).

1.2. Install directly on a Dynamics 365 On-Premise Server

When you want to use Dynamics 365, you can install DocumentsCorePack on every supported operating system. You must specify a valid Dynamics 365 profile. In this case, you have limited functionality of DocumentsCorePack. You cannot use the following features:

- SharePoint Folder and Site integration
- File Explorer integration



After the setup, you can start the DocumentsCorePack Configuration in the Windows Start menu to install and configure DocumentsCorePack in other Dynamics 365 organizations.



The linked image cannot be displayed. The file may have been moved, renamed, or deleted. Verify that the link points to the correct file and location.

2. Installation of the DocumentsCorePack Server

This chapter explains how to install the Server component. It is important to ensure that the machine is online to the Dynamics 365 server.

2.1. Online Service Configuration

The setup allows users to configure DocumentsCorePack Document Generation for Microsoft Dynamics 365 Online without local installations. The service, as well as licensing, can be configured and maintained on our website.

Follow the links below for additional information:

- [Start Trial/Configure Services for DocumentsCorePack for Microsoft Dynamics 365](#)
- Watch our DocumentsCorePack ServerBased Online Configuration [YouTube Video](#)
- [DocumentsCorePack User Guide](#)

2.2. Installation

Run the "**DocumentsCorePack Server for MS Dynamics 365.exe**" setup file. You will see the following window:

Hit the **1 Next** button to continue with the license agreement.



Figure 1: DocumentsCorePack installer for Dynamics 365

2.3. End User License Agreement (EULA)

Please accept the license agreement by checking the first checkbox and click on the **Next** button.

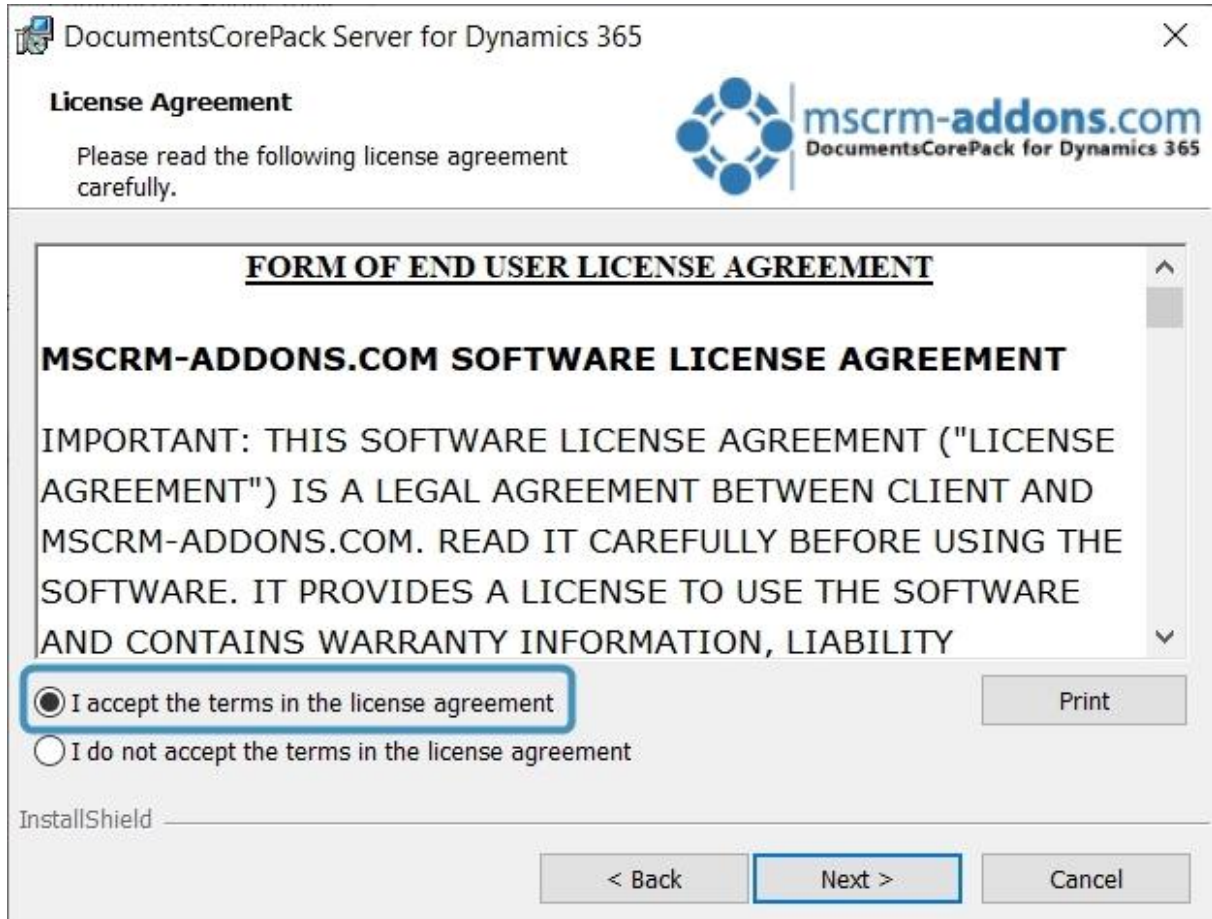


Figure 2: End User License Agreement (EULA)

2.4. Confirm the installation

If you want to change any of your installation settings, please hit the **1 Back** button or you can **2 Change** the installation folder as shown in the figure below. Click **3 Next** to proceed.

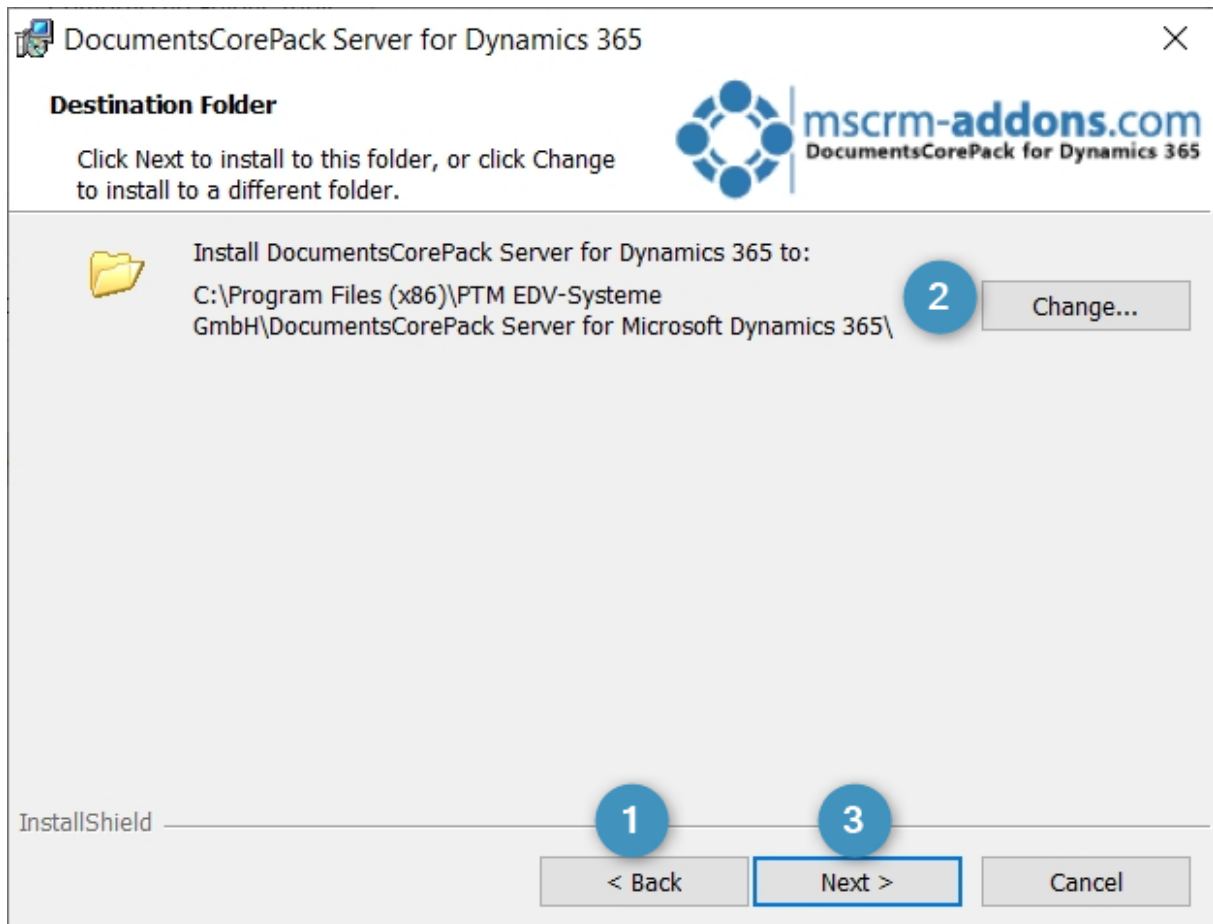


Figure 3: Confirm with Install

If you want to review or change any of your installation settings, click **1 Back**. Click **2 Cancel** to exit the wizard and **3 Install** to proceed.

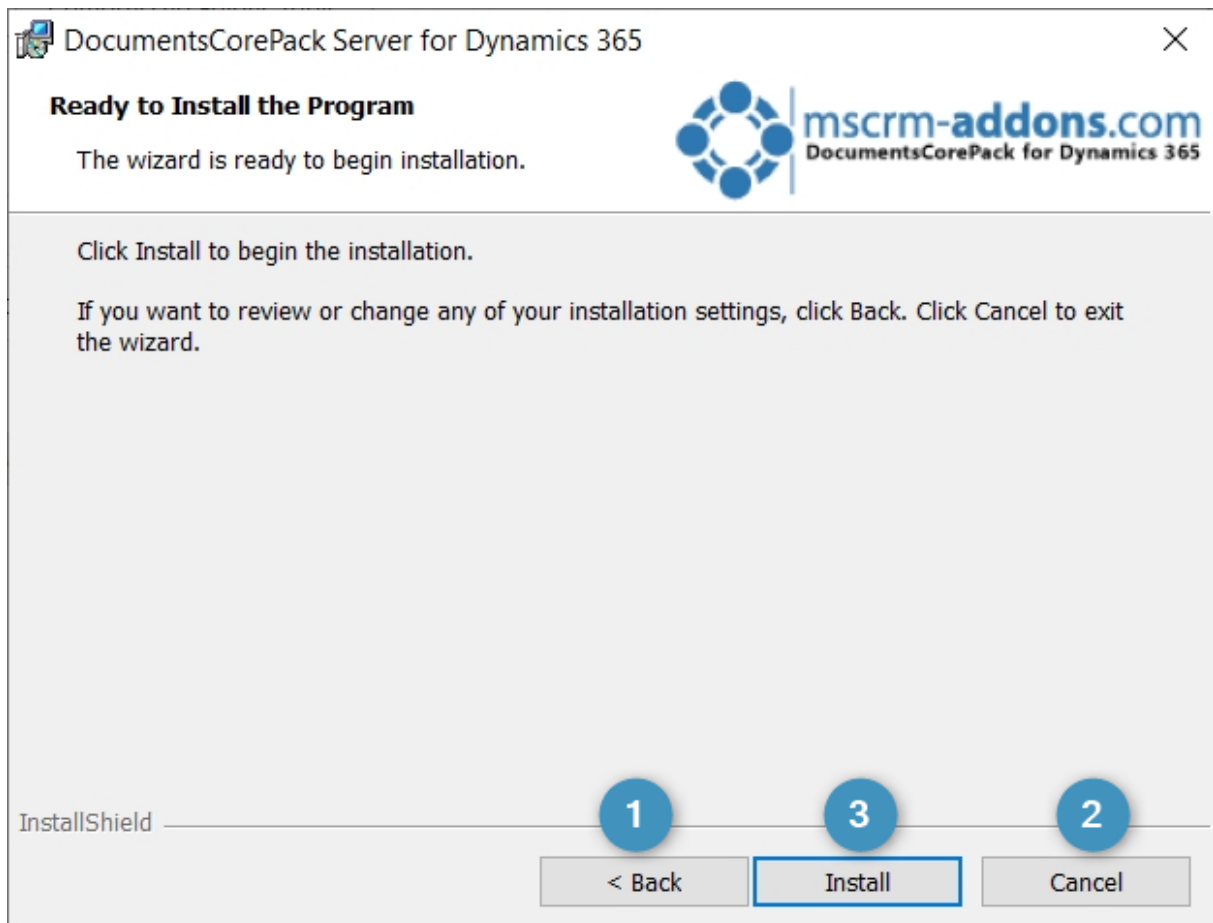


Figure 4: Install the program

2.5. Install the Windows Identify Foundation

To use the DocumentsCorePack Server for Microsoft Dynamics 365 you have to install the Windows Identify Foundation. This window will pop up when the Window Identify Foundation is not installed.

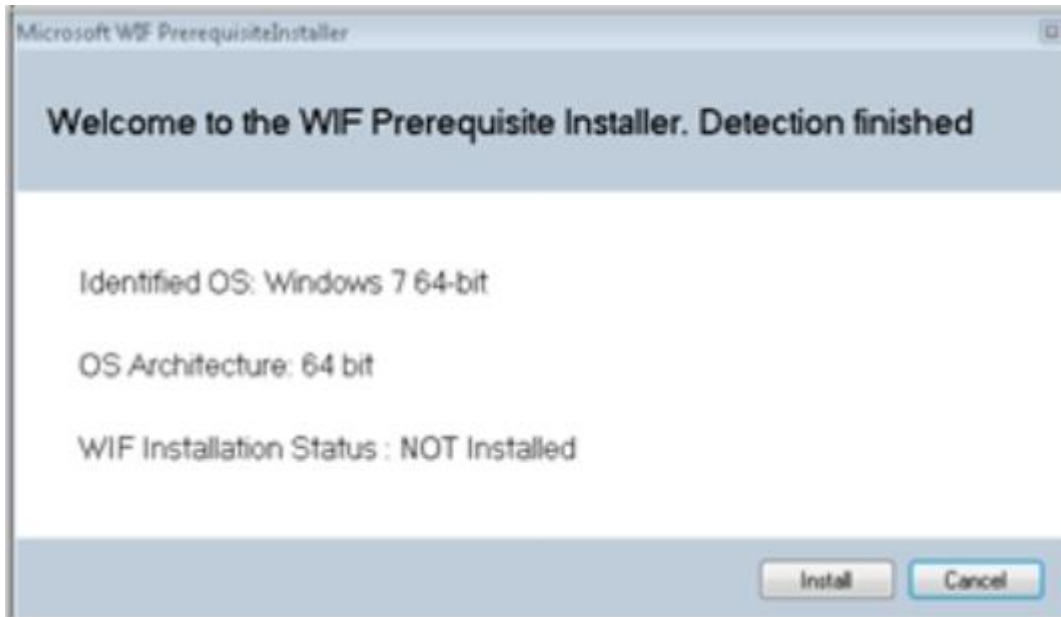


Figure 5: Install Windows Identify Foundation

2.6. Configure Dynamics 365 Server

Next, you must configure your Dynamics 365 server. Select your **1 Existing Profile** or create a new profile and select your **2 Dynamics 365 type**. Choose the **3 Dynamics 365 Server-URL** and add your login credentials by filling in the **4 Use default Credentials** like username, password and domain fields. Click on the **5 Retrieve all** button and as soon as the organizations are retrieved, choose the respective one and press the **6 OK** button.

Logon information - DocumentsCorePack Server Based generation (2020.136)

Welcome to your Dynamics 365 Connection setup.

Please specify your connection details to connect to Dynamics 365. If you do not know the connection details, please contact your system administrator

Dynamics 365 Connection | Advanced Settings | Log

Existing Profiles **1** Manage | New

Select your Dynamics 365 Type **2**

OnPremise
 IFD/Hosted
 Online
 AppAccess

Dynamics 365 Server-Url:

3

Authenticated as:

Use default Credentials **Not enough information** **4**

Username Domain Password

Retrieve all Organiza **5**

Organization information:

Friendly name	Unique name	ServiceURL	

6
OK | Cancel

Figure 6: Dynamics 365 Connection setup



If an old DocumentsCorePack version is detected during installation, you will be prompted to uninstall.

2.7. Security Roles

General security roles for all products:

The following security role is required by all our products:

- MSCRM-Addons General Security Role

This security role contains the basic requirements for using the product itself and being able to perform the license-check.

Product-specific security roles:

The following security roles are required only by specific products. All users that should work with the products require both the MSCRM-Addons General Security Role and the product-specific security roles.

- **DocumentsCorePack**
DocumentsCorePack Security Role
- **AutoMerge**
MSCRM-ADDONS.com AutoMerge

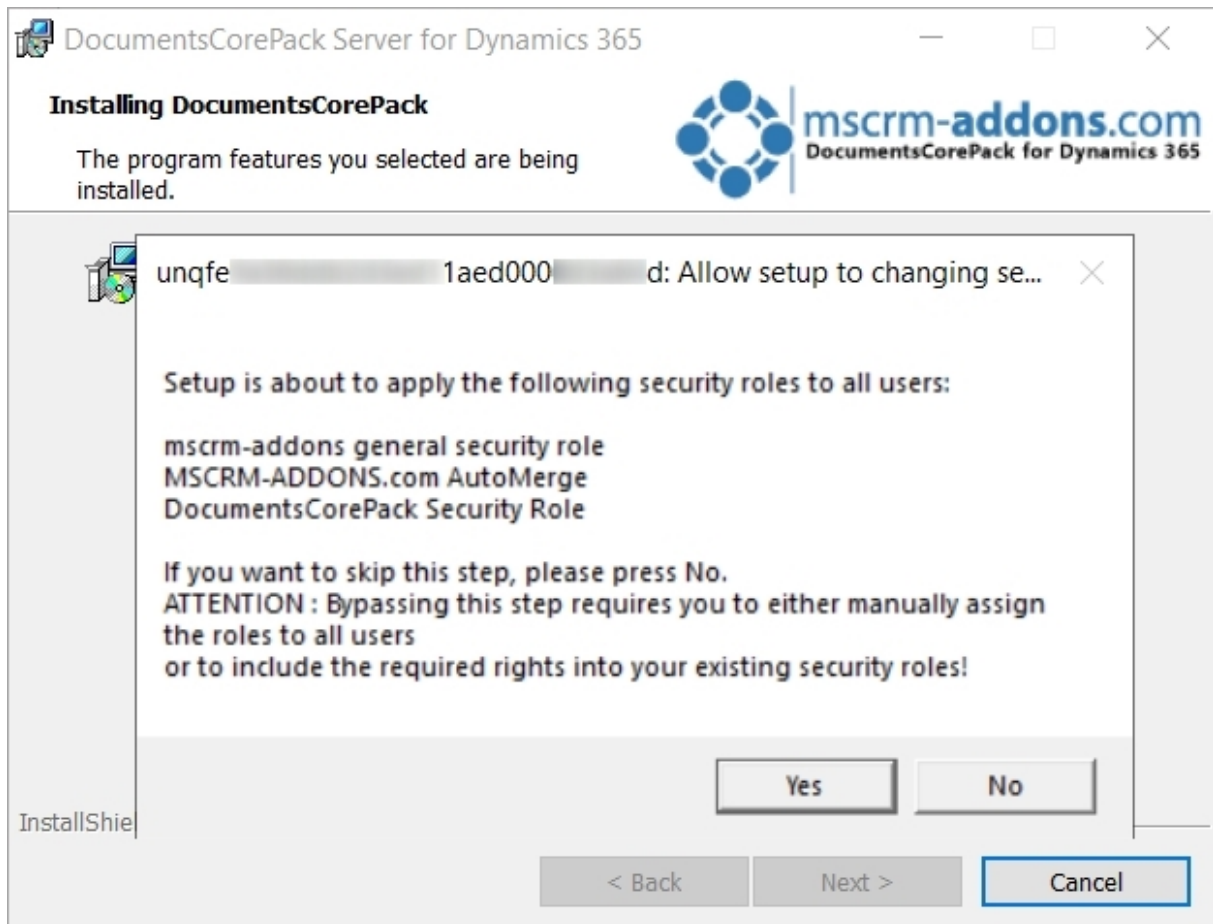


Figure 7: Security roles

Click **[Yes]** to allow the setup of changing these security roles. Click **[No]** to skip this step.



If you skip this step, you will be required to either manually assign the roles to all users or to include the required rights into your existing security roles.

If SharePoint is already configured in your Dynamics 365 system, the following window will appear. Confirm with **Yes** to allow the DocumentsCorePack Server setup to use SharePoint. Click **No** to skip this step.

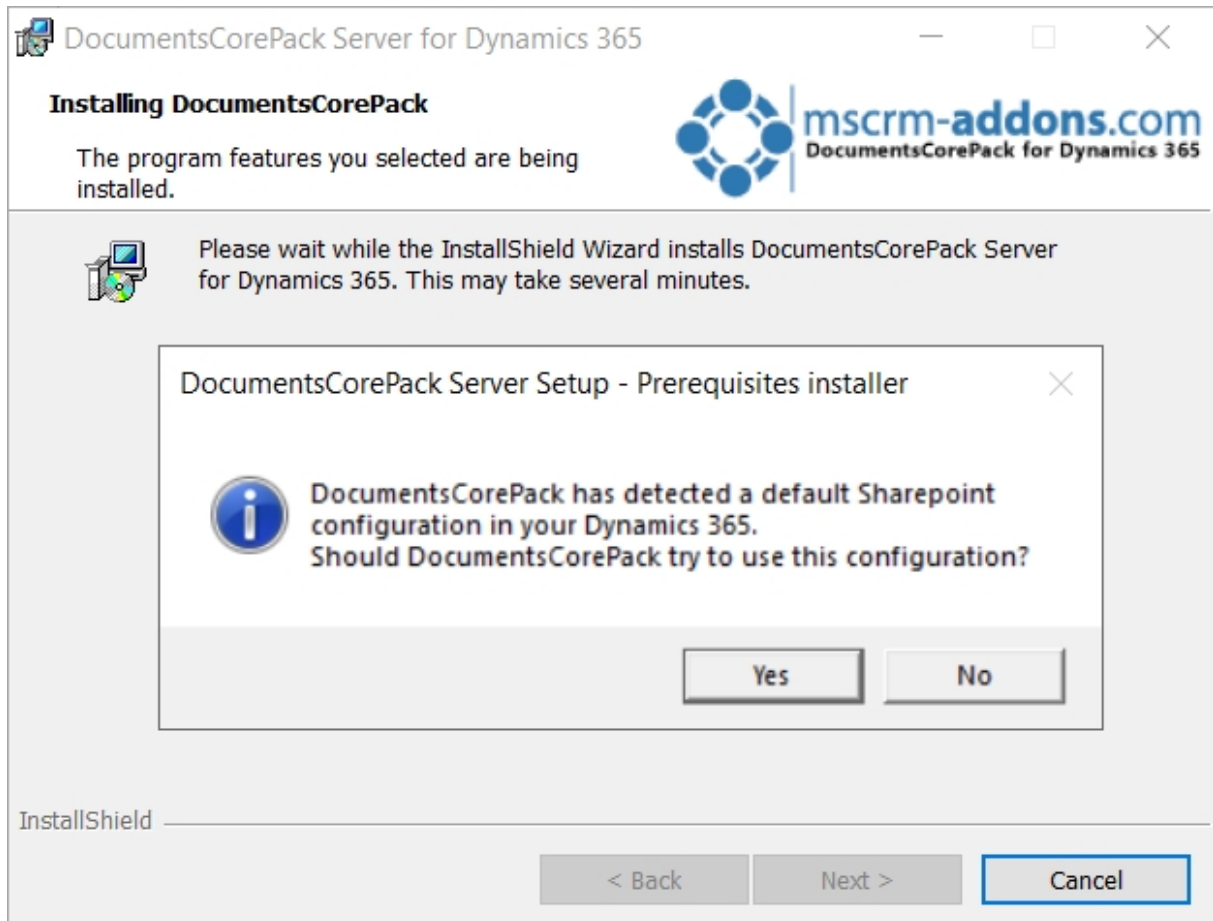


Figure 8: Default SharePoint configuration detected

2.8. Finish the installation

The DocumentsCorePack Server Configuration will start automatically for the organization you selected during the setup. Click **Finish** to continue.



If an obsolete product has been detected during the setup, you will be asked to delete these unnecessary product(s) to avoid confusion between the two products.

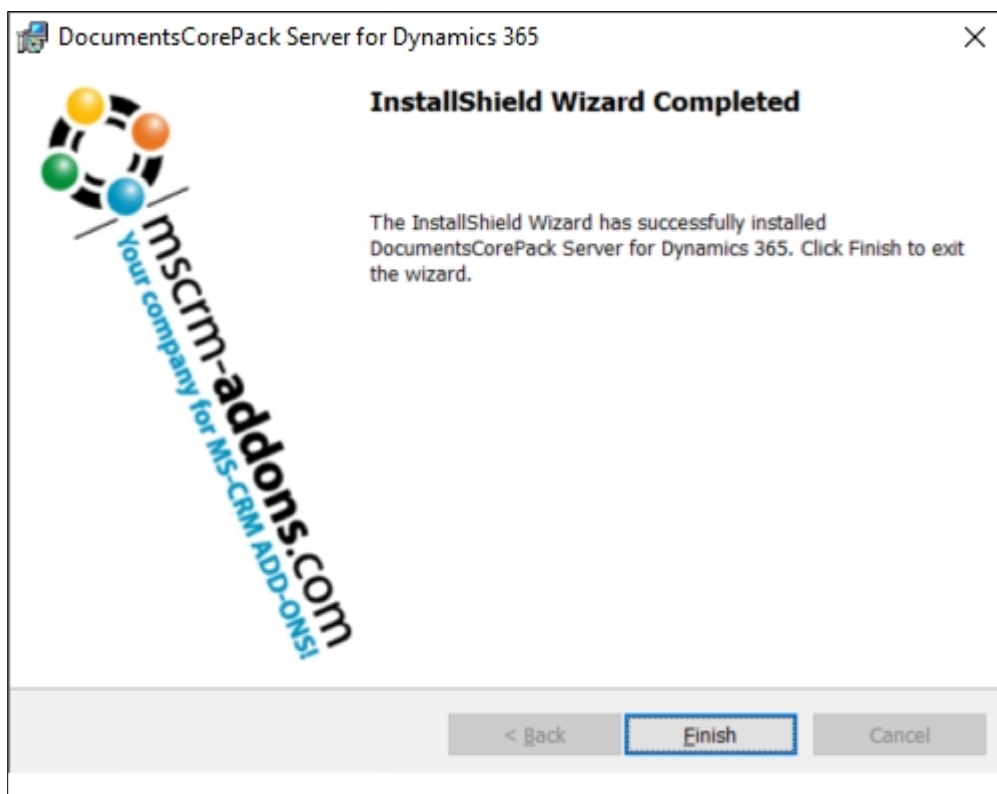


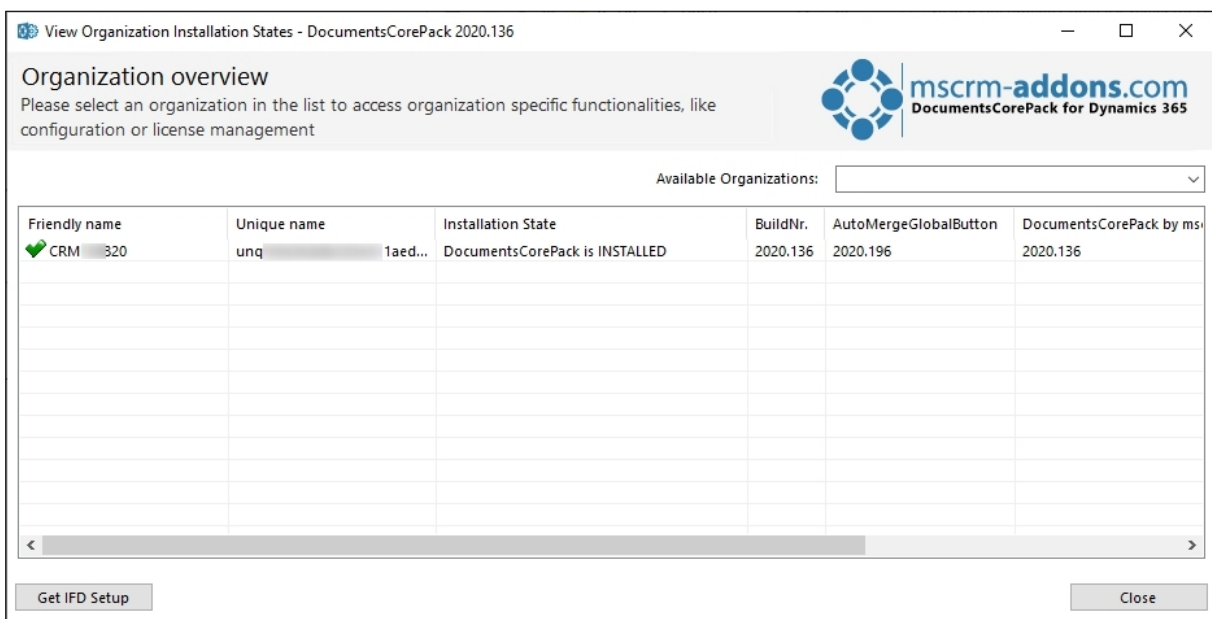
Figure 9: Finish installation

2.9. Organization overview

After finishing the configuration, the **Organization overview** window opens. With a click on the configuration, you have the option to edit the service.



To open the **Organization overview** again, after closing, search in the Windows Start pane **Configuration – DocumentsCorePack for Dynamics 365**.



Organization overview
Please select an organization in the list to access organization specific functionalities, like configuration or license management

Available Organizations:

Friendly name	Unique name	Installation State	BuildNr.	AutoMergeGlobalButton	DocumentsCorePack by ms
✓ CRM 320	unq... 1aed...	DocumentsCorePack is INSTALLED	2020.136	2020.196	2020.136

Figure 10: Organization overview

2.10. Organization overview – Function buttons

After choosing an organization in the Organization overview window, the several function buttons will appear at the bottom of the window.

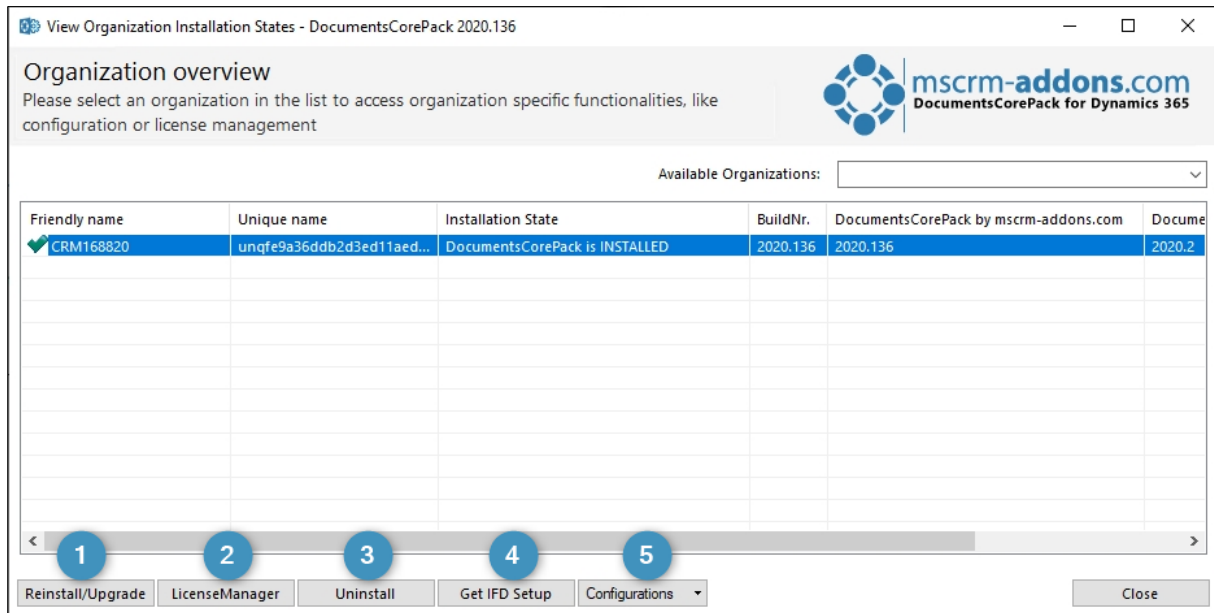


Figure 11: Organization over - function buttons

- 1 **Reinstall/Upgrade:** Upgrade your solution to the latest version.
- 2 **License Manager:** The License Manager provides you with an overview of all the **MSCRM-ADDONS products** you have installed. Selecting a product in this overview will bring up the according license details on the right side. A green check next to an add-on icon means that its license is valid. A cross symbolizes an invalid license. More information about the local License Manager can be found in the corresponding [documentation](#) (chapter 2.1 Local License Manager Overview).
- 3 **Uninstall:** With a click on this button, you have the option to uninstall DocumentsCorePack from the selected organization. Before it is uninstalled, you will be provided with the Uninstall window. Here, click on the **Yes** button to uninstall the service or click on the **No** button to cancel.
- 4 An **IFD setup** is only required when using FileExplorer or SharePoint Folder and Sites Integration. Therefore, you must install IFD before you can use it via this button.
- 5 **Configurations:** This button allows you to configure the 1 DocumentsCorePack Template Designer & Dynamics 365 generation settings and to set up the 2 Service Configuration in Dynamics 365 and print jobs.

2.11. Client & Server Based generation settings

Hit the **Launch** button to open the settings for **DocumentsCorePack Template Designer** and/or **Dynamics 365 Document Generation**. The window that opens provides you with a few tabs to help you configure your Client and Server Based Generation settings. Here, users can configure which entities the Server and/or Client Based button should appear for and rename the button label. (For example, configure which entities you want to see for the **Export** button).

Please Note:

Client = DocumentsCorePack Template Designer

Server Based = DocumentsCorePack

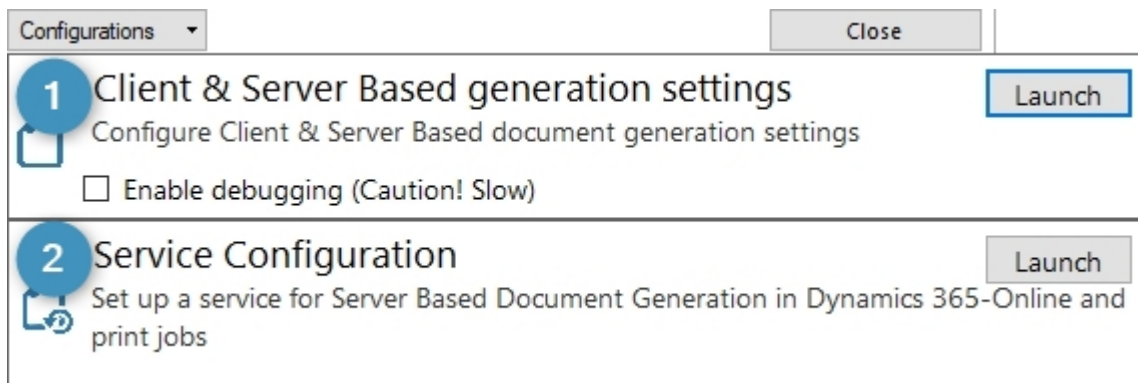


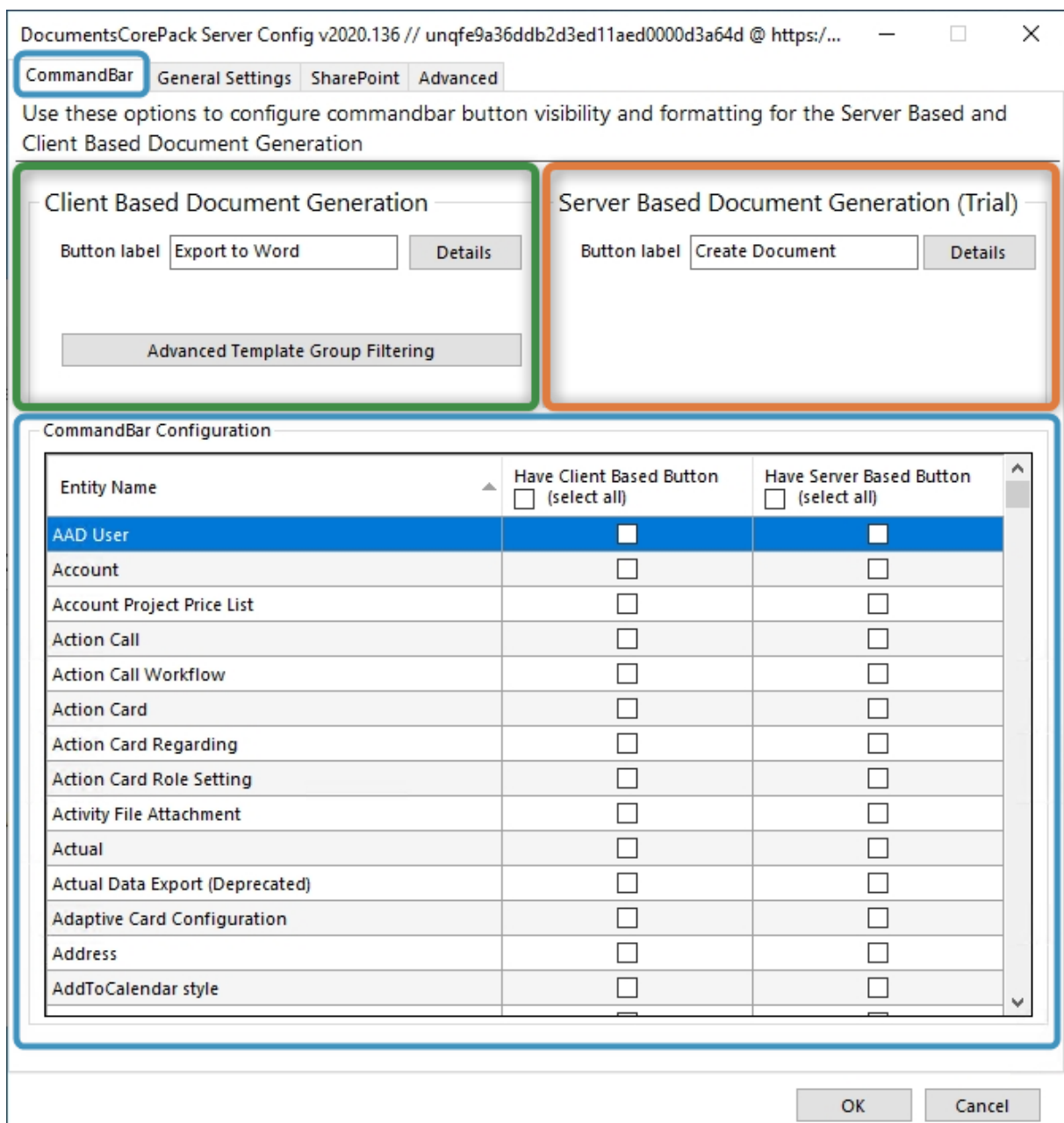
Figure 12: Configurations

1.3. The Command bar tab

The options in the **CommandBar** tab help you to configure the CommandBar button visibility and the formatting for DocumentsCorePack and DocumentsCorePack Template Designer Document Generation.

Here users can configure the entities where you want them to show, as well as display the name of these buttons:

- The **Export To Word** button for the DocumentsCorePack Template Designer Document Generation
- The **Create Document** button for the DocumentsCorePack Document Generation



DocumentsCorePack Server Config v2020.136 // unqfe9a36ddb2d3ed11aed0000d3a64d @ https/...

CommandBar | General Settings | SharePoint | Advanced

Use these options to configure commandbar button visibility and formatting for the Server Based and Client Based Document Generation

Client Based Document Generation

Button label: Details

Advanced Template Group Filtering

Server Based Document Generation (Trial)

Button label: Details

Entity Name	Have Client Based Button <input type="checkbox"/> (select all)	Have Server Based Button <input type="checkbox"/> (select all)
AAD User	<input type="checkbox"/>	<input type="checkbox"/>
Account	<input type="checkbox"/>	<input type="checkbox"/>
Account Project Price List	<input type="checkbox"/>	<input type="checkbox"/>
Action Call	<input type="checkbox"/>	<input type="checkbox"/>
Action Call Workflow	<input type="checkbox"/>	<input type="checkbox"/>
Action Card	<input type="checkbox"/>	<input type="checkbox"/>
Action Card Regarding	<input type="checkbox"/>	<input type="checkbox"/>
Action Card Role Setting	<input type="checkbox"/>	<input type="checkbox"/>
Activity File Attachment	<input type="checkbox"/>	<input type="checkbox"/>
Actual	<input type="checkbox"/>	<input type="checkbox"/>
Actual Data Export (Deprecated)	<input type="checkbox"/>	<input type="checkbox"/>
Adaptive Card Configuration	<input type="checkbox"/>	<input type="checkbox"/>
Address	<input type="checkbox"/>	<input type="checkbox"/>
AddToCalendar style	<input type="checkbox"/>	<input type="checkbox"/>

OK Cancel

2.12.1. DocumentsCorePack Template Designer (Client Based) document generation

This section contains all settings for DocumentsCorePack Template Designer Document Generation. With a click on **Export to Word**, you can define a different name for the **Button label**.

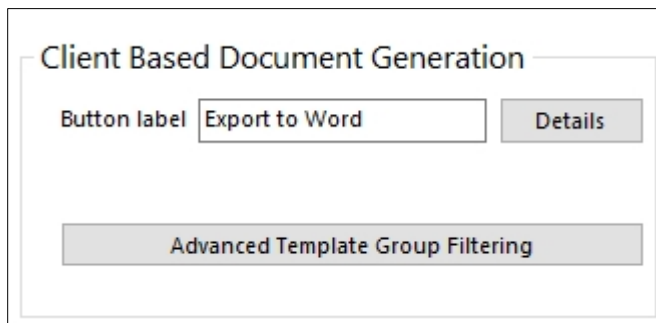


Figure 13: Client Based Document Generation

With a click on **Details**, the **Edit Ribbon & Navigationbar resources** window opens.

The editor allows you to modify the default ribbon and navigation bar icons and labels supplied by DocumentsCorePack server.



Image resources must be available as web resources in Dynamics 365 to be able to use. Use the refresh button on each control to reload the list of available resources.

1 Icons: The Icons tab of this configuration window gives you the possibility to change the icons of the buttons. The icons are Dynamics 365 web resources, which you can upload yourself with the standard Dynamics 365 functionality.

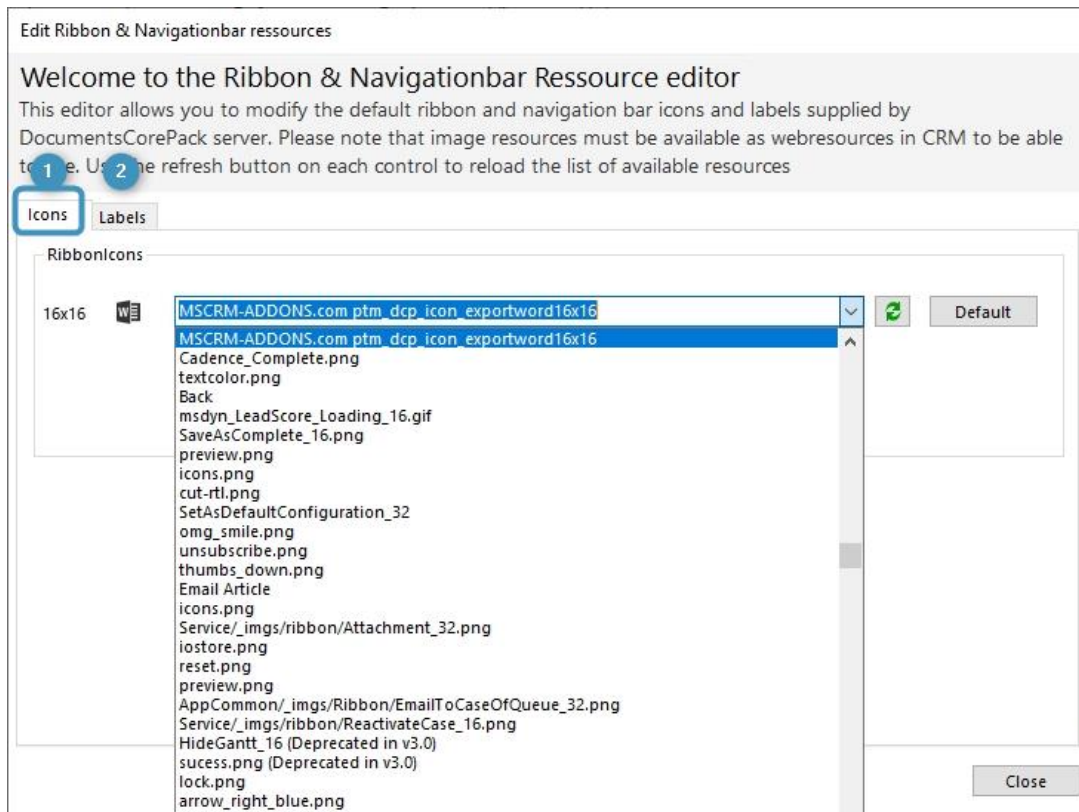


Figure 14: Ribbon and Navigation bar resources

2 Labels: Within this dialog you can set the different labels for the different locations (Grid, Form...) of the **Export to Word** button for different languages.

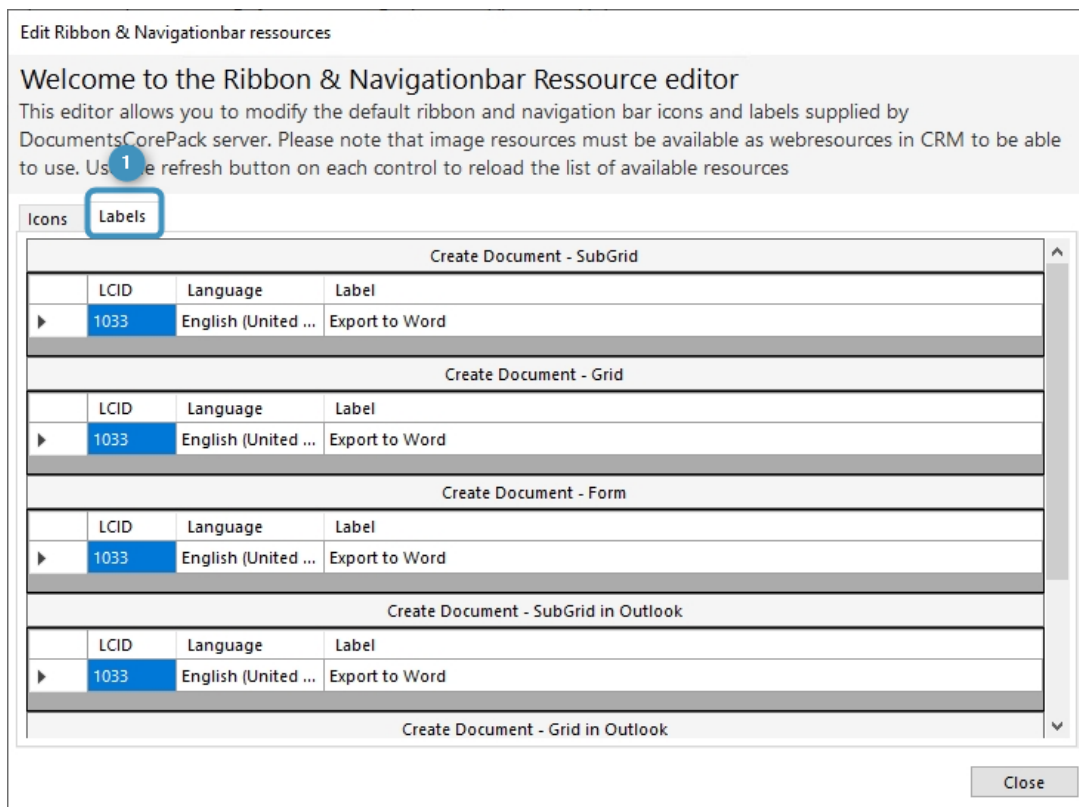


Figure 15: Labels tab

Advanced Template Group Filtering: This feature offers the option to set a filter for DocumentsCorePack templates.

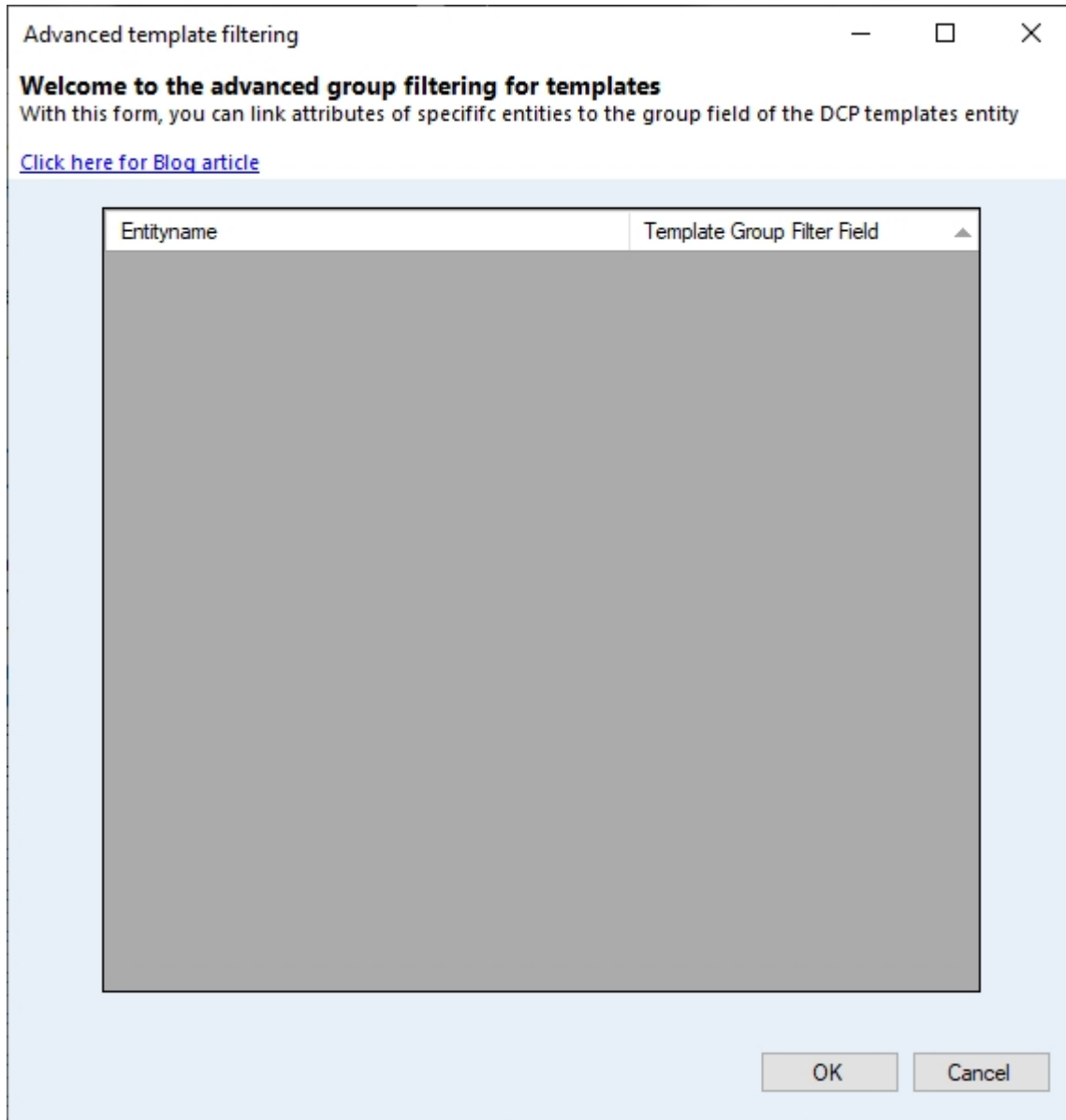


Figure 16: Advanced template filtering

While saving the changes, the following window will appear. Click **OK** to continue saving. **IMPORTANT:** DO NOT KILL the process when it freezes. This could cause inconsistent data in Dynamics 365. You have to wait until the configuration is finished. Click **Cancel** to save a later time.

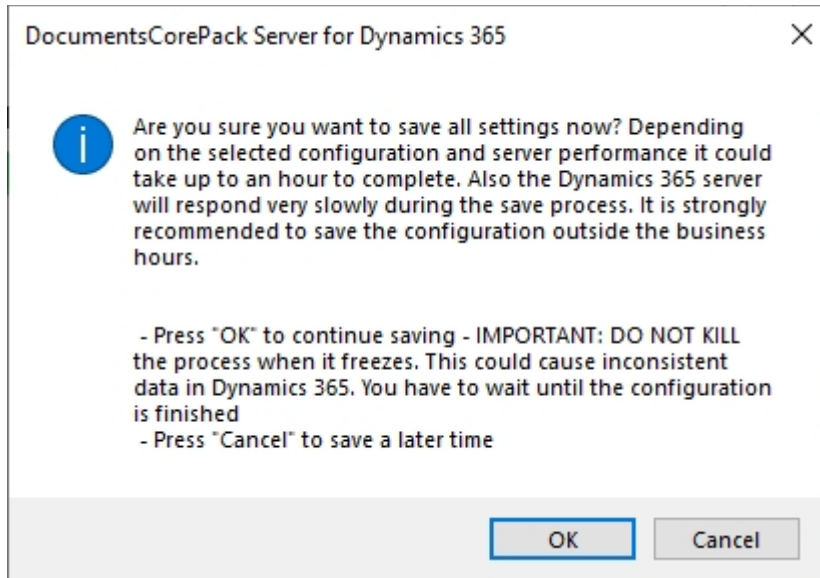


Figure 178: Save settings

2.12.2. Server Based document generation

Our custom dialog gives a quick start to server-based document generation. Users can directly start using the product after the installation without the need of designing a new process or dialog to see the product in action.

All our addons come with a 14-days trial license. If the trial license is expired, the window will look like in the screenshot shown above. Please contact our support team to get the permanent license for DocumentsCorePack and / or DocumentsCorePack Template Designer Document Generation & Processing should this occur.

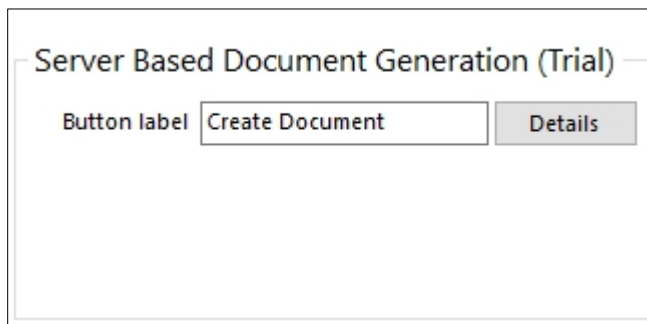


Figure 18: Server Based Document Generation (Trial)

2.12.3. Command bar Configuration

This part of the configuration allows users to select the entities where the DocumentsCorePack Template Designer and or Server Based Button should appear.

- 1 Activating the checkboxes will select the **DocumentsCorePack Template Designer Document** Generation Button **Export to Word** for the selected entity.
- 2 Activating the checkboxes will select the **DocumentsCorePack Designer Document** Generation Button **Create Document** for the selected entity.

CommandBar Configuration

Entity Name	1 Have Client Based Button <input checked="" type="checkbox"/> (select all)	Have Server Based Button <input checked="" type="checkbox"/> (select all) 2
wkwconfig	<input checked="" type="checkbox"/>	<input checked="" type="checkbox"/>
Work Order	<input checked="" type="checkbox"/>	<input checked="" type="checkbox"/>
Work Order Business Process	<input checked="" type="checkbox"/>	<input checked="" type="checkbox"/>
Work Order Characteristic (Deprecated)	<input checked="" type="checkbox"/>	<input checked="" type="checkbox"/>
Work Order Details Generation Queue (Deprecated)	<input checked="" type="checkbox"/>	<input checked="" type="checkbox"/>
Work Order Incident	<input checked="" type="checkbox"/>	<input checked="" type="checkbox"/>
Work Order Product	<input checked="" type="checkbox"/>	<input checked="" type="checkbox"/>
Work Order Resolution	<input checked="" type="checkbox"/>	<input checked="" type="checkbox"/>
Work Order Service	<input checked="" type="checkbox"/>	<input checked="" type="checkbox"/>
Work Order Service Task	<input checked="" type="checkbox"/>	<input checked="" type="checkbox"/>
Work Order Substatus	<input checked="" type="checkbox"/>	<input checked="" type="checkbox"/>
Work Order Type	<input checked="" type="checkbox"/>	<input checked="" type="checkbox"/>
Work Stream	<input checked="" type="checkbox"/>	<input checked="" type="checkbox"/>
Work template	<input checked="" type="checkbox"/>	<input checked="" type="checkbox"/>

Figure 19: Command bar configuration

1.4. The General Setting tab

1 **Import/Export Templates:** For more information about the import/export of DCP templates, please have a look at chapter [6.2 Import/export existing DocumentsCorePack templates.](#)

2 **Language:** You can choose the language from the dropdown-box. Languages are listed in language code (en for English, de for German). To add another language, please have a look at chapter [7 Language Settings for DocumentsCorePack.](#)

3 **Debug:** Please leave this option unchecked. It is used by our support for bug fixing.

4 **Data Source:** Here you can select the type of data source. This contains cached information from Dynamics 365, which can be used with the DocumentsCorePack Template Designer.

5 **Names to Cut:** This functionality is deprecated.

6 **Replace Special Characters:** Treats special exceptions or certain coding problems with Dynamics 365.

7 **Additional Entities:** DocumentsCorePack only shows customizable entities by default. If you want to use other entities for DocumentsCorePack, you must define them here.

8 **Entities don't show:** Entities that are registered here will be hidden and are not useable/visible within DocumentsCorePack.

9 **Unavailable entities:** Entities which are not included in the metadata cache.

10 **Folder Displayattribute:** Here you can define the attribute for each entity that should be used for the folder name (affects SharePoint AND File Explorer). You can ignore this setting if you don't save your documents in one of these locations. Per default the "name" attribute is used.

11 **Metadata Cache (Not Created):** Create your metadata and save it to a local location. This is the fastest way to download metadata to the DocumentsCorePack Template Designer.

Please note: once created, this functionality needs to be updated manually!

12 **Server Based Document Generation Settings:** With a click on this button, users will access the "AutoMerge Config" in DocumentsCorePack to set up a service for Server Based Document Generation in Dynamics 365 and print jobs. For detailed information, please read [chapter 2.5 Service Configuration](#).

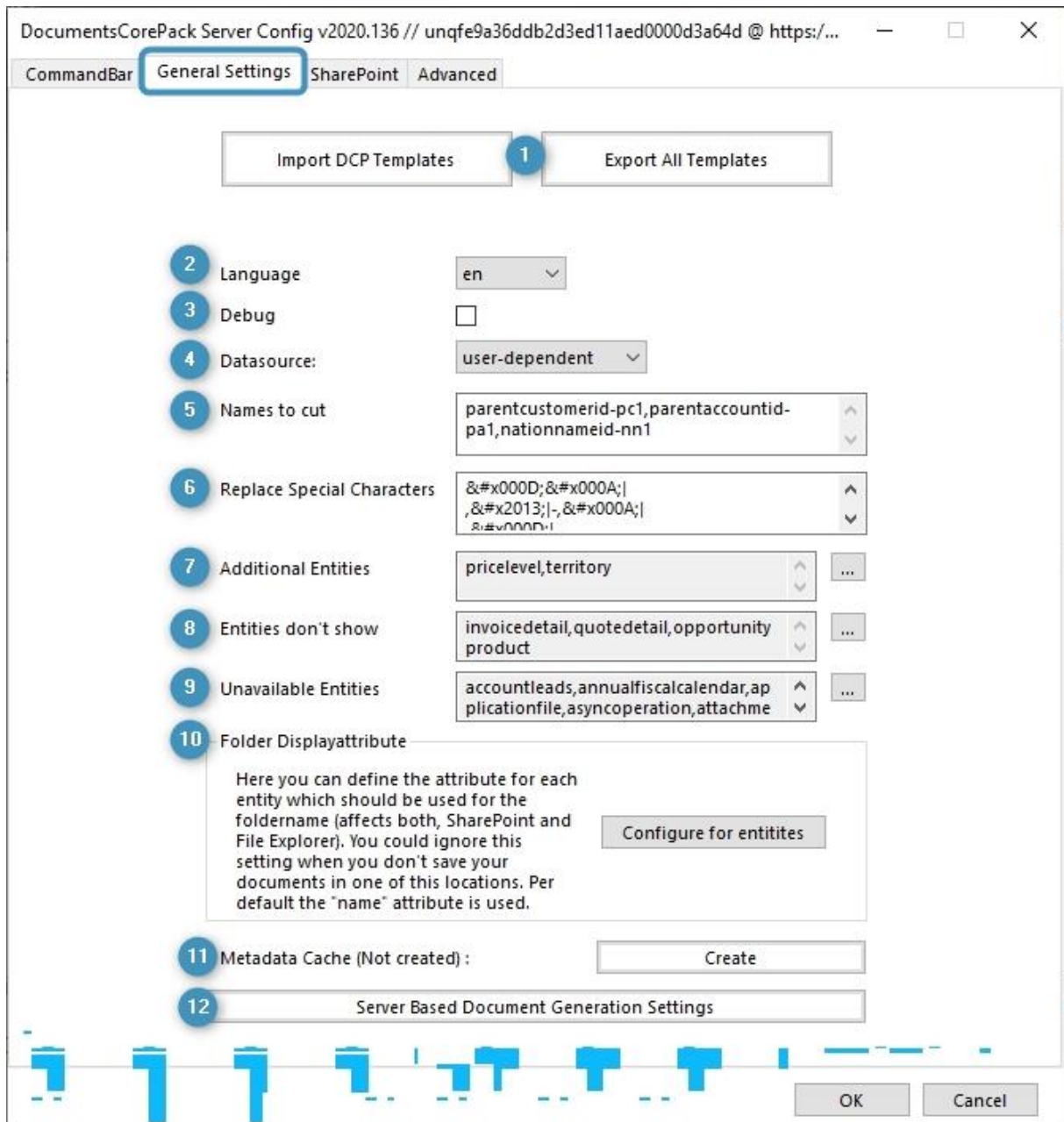


Figure 20: General Settings tab

1.5. The Sharepoint tab

Here, you have the option to define your SharePoint settings, if you want to save documents to SharePoint. The SharePoint Integration provided by DocumentsCorePack generates a separate folder in a site or a site for each record and gives you a structured and easy way to add files to your Dynamics 365 records.

Because Microsoft has introduced his own SharePoint Integration with MS CRM 2011, the SharePoint Integration provided by DocumentsCorePack is depreciated and will not be further developed but can be used by existing customers and in MS CRM 2015. The DocumentsCorePack Template Designer supports both SharePoint Integrations




To use the SharePoint integration, you must configure it within Dynamics 365. When enabled, the documents generated via the DocumentsCorePack Template Designer will be saved in the Dynamics 365 specified SharePoint location for each record.

DocumentsCorePack Server Config v2020.136 // unc [redacted] s:/... - □ ×


CommandBar General Settings SharePoint **Advanced**


Save Documents in SharePoint

CRM Integrated Save in Folders Save in Sites

SharePoint Server 

Use HTTPS

Root Site 

Template 

Document Library Name

Entity Specific Sites

Entity Relation Sites

Entity Site Name

Use Unique Permissions

Activity Settings

Here you can configure where you want to see the created documents for an entity

Use other aspx-site

SharePoint Documents NavBar Name

Figure 21: SharePoint tab

1.6. Service Configuration

To open the Service Configuration, please search for “**ServiceManagement – DocumentsCorePack for Dynamics 365**” in the Windows start menu and run this application.

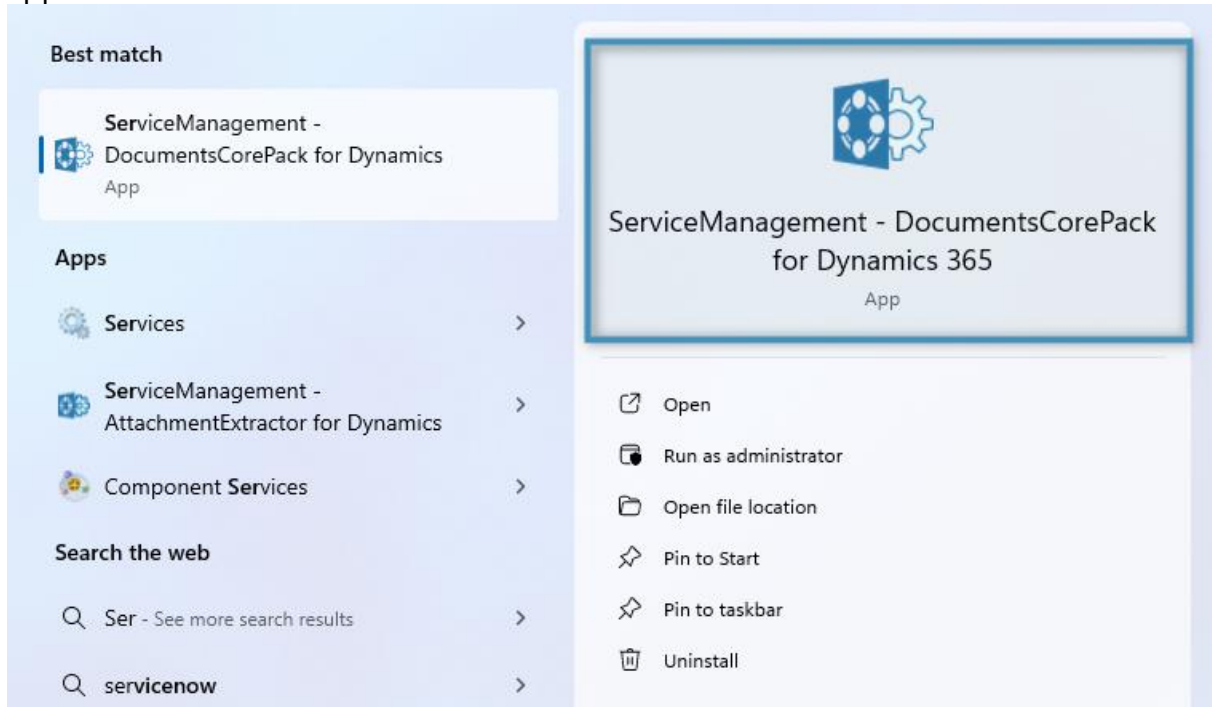


Figure 22: Look for ServiceManagement in the task pane

2.15.1 The General tab

The **General** tab is where your service is initially defined and where other service-specific settings are located. You will first only be allowed to **1 define and verify a service name**, but once that has been done, the following settings can be modified:

- The **2 Service Logon** settings allows you to configure a service user for use with printing.
- You can define a **3** logfile path where debug logs will be saved to if debugging is enabled.
 - **Note:** Each Load Balancing service needs its own path
- The **4 batch size** and **5 batch delay** settings can be adjusted for batch document generation jobs. We recommend setting the batch delay to ten (10) seconds.
- You can decide if the service should work on **6** print jobs, document generation jobs, or both.
- The **7 Always restart on service failure** setting restarts the service automatically when an error occurs to prevent any downtime.

Additionally, you can **8** stop or **9** start the service, or **10** configure Load Balancing as needed (more info below). You can also **11** delete the service if required.

Don't forget to **12** **save your service configuration** once you have finalized your settings. Once your service is running, it will be shown in the **Active Services** section of the app.

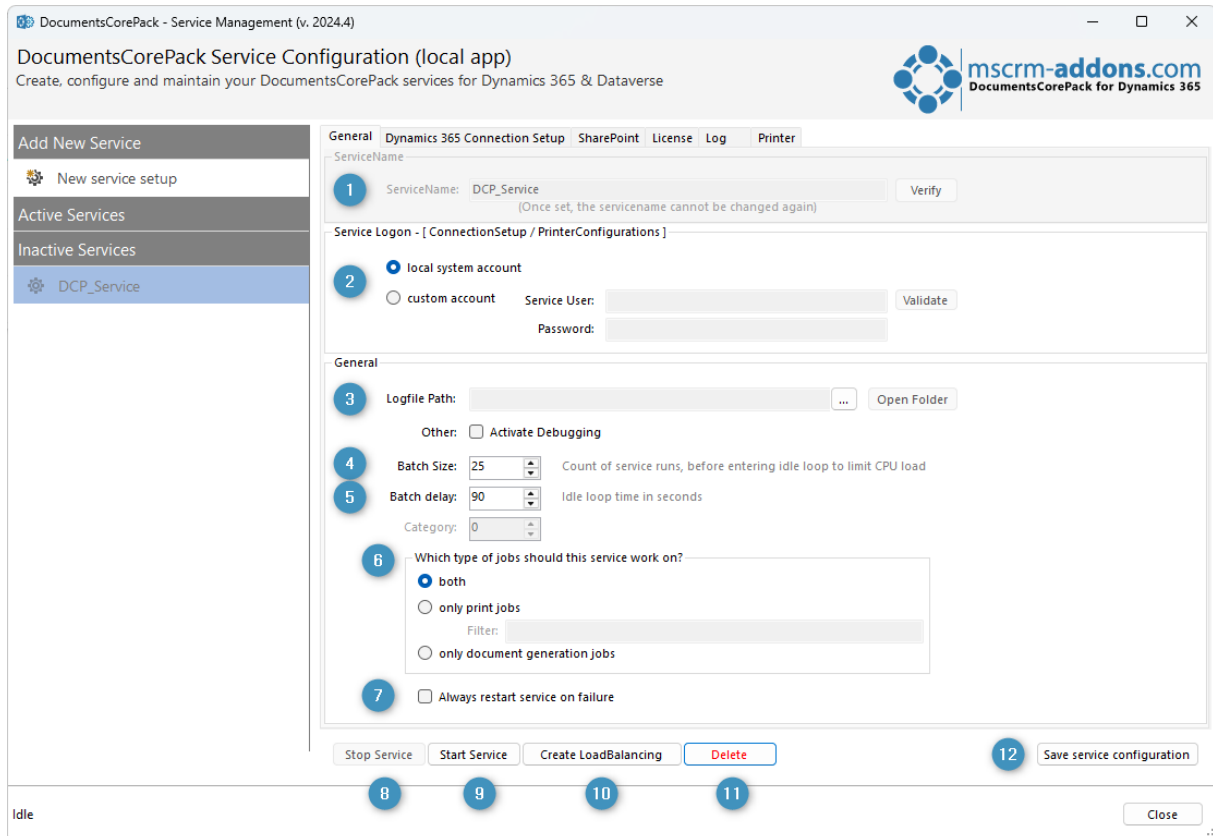


Figure 23: General tab

2.15.2. The Dynamics 365 Connection Setup tab

In the **Dynamics 365 Connection Setup** tab, you can specify your Dynamics 365 connection. You will first need to select your **1** **Dynamics 365 type**, then enter your **2** **Dynamics 365 Server-Url**. Once those have been defined, click on **3** **Retrieve all Organizations** to enter your credentials.

A list of organizations will be displayed under **4** **Organization Information**. Select the organization you would like to connect to and confirm with **5** **OK**.

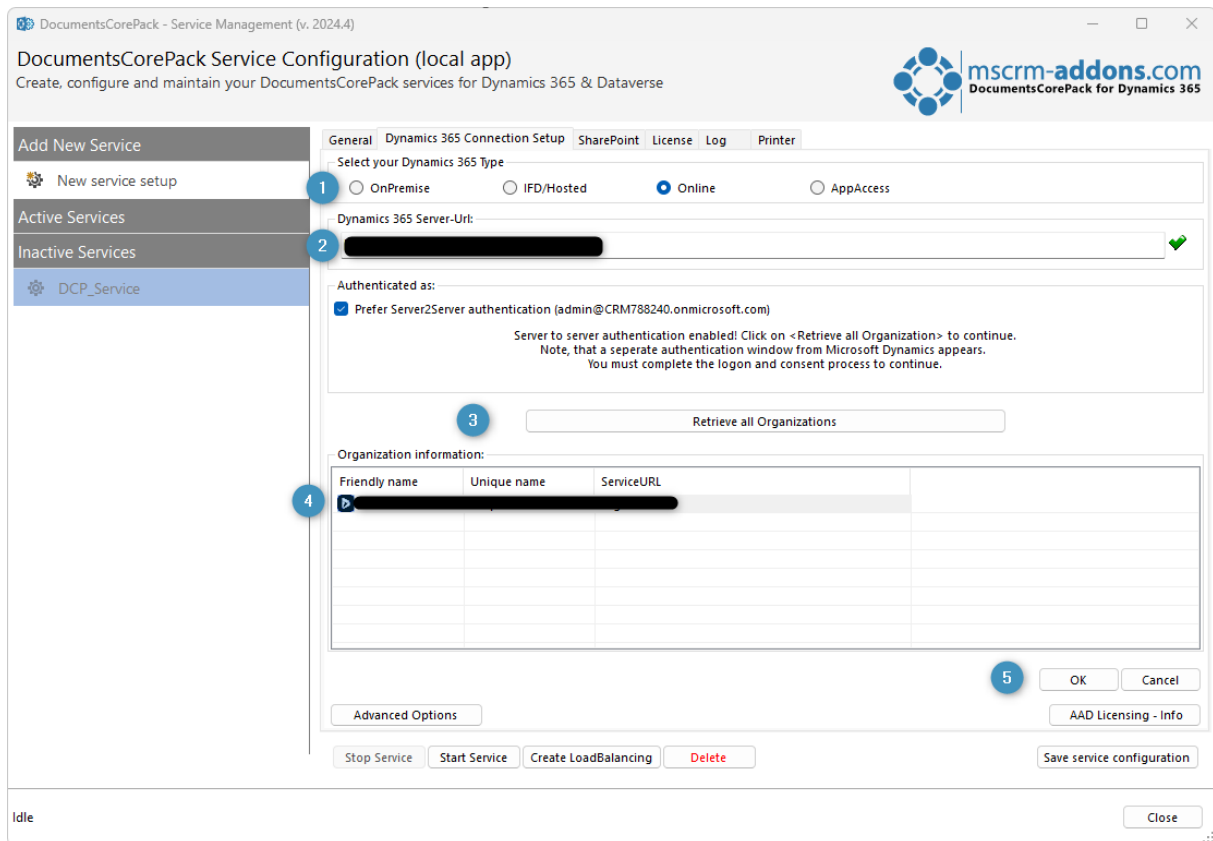


Figure 24: Dynamics 365 Connection Setup

2.15.3. The SharePoint tab

In the **SharePoint** tab, you can configure your SharePoint connection. You will need to choose how **1** **SharePoint should be used**, specify a **2** **SharePoint site URL**, and select a **3** **connection type**. Once those settings have been configured, you can **4** **setup the connection**.

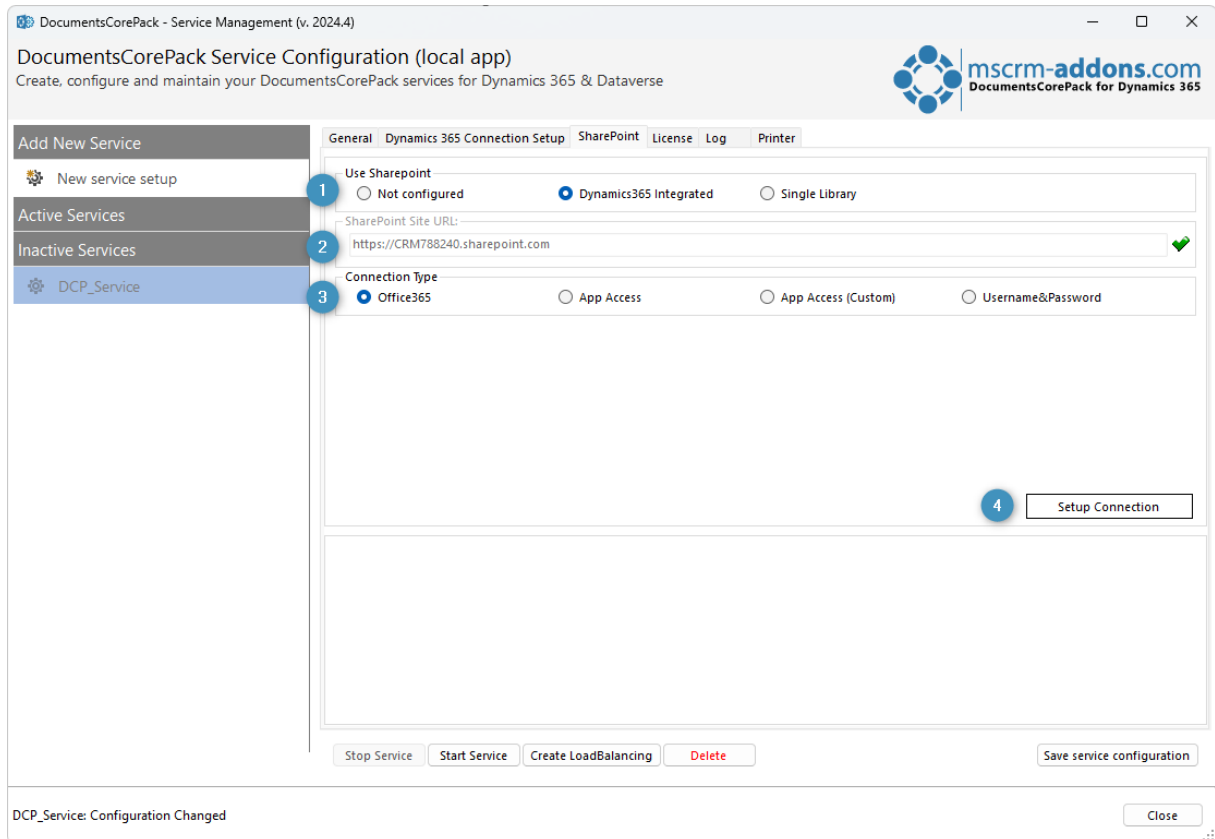


Figure 25: The SharePoint tab

2.15.4. The License tab

In the **License** tab, you can view the information about your license. In the example below, the license is valid.

DocumentsCorePack Server - Management (v. 2020.149)

Welcome to the DocumentsCorePack Service Overview
This tool will help you create and manage your merge services

mscrm-addons.com
DocumentsCorePack for Dynamics 365

General Dynamics 365 Connection Setup **License** Log Printer

Your license is Valid

General license information (CRM 9.2.23094.220)

	Licensevalue	Systemvalue	Status
Licensemodel	perSite		?
Licensekey	/8MA1WmlVq3h/TrJjQM8LIB...	Licensekey installed	!
BusinessUnit	unqd9d7301fca63ee11a382...	unqd9d7301fca63ee11a382002248282	✓
Number of site licenses	12	1	✓
Licenses for Readonly Users	0	0	✓
Expiration	2/12/2024 12:00:00 AM	98 days left	✓
Support	2/12/2024 12:00:00 AM	98 days left	✓
Issued product	DocumentsCorePack Server ...	DocumentsCorePack Server Based generation	✓
Version upgrade covered ...	2/12/2024 12:00:00 AM	10/30/2023 10:26:46 AM	✓

License Status

LicenseState	valid	✓
--------------	-------	---

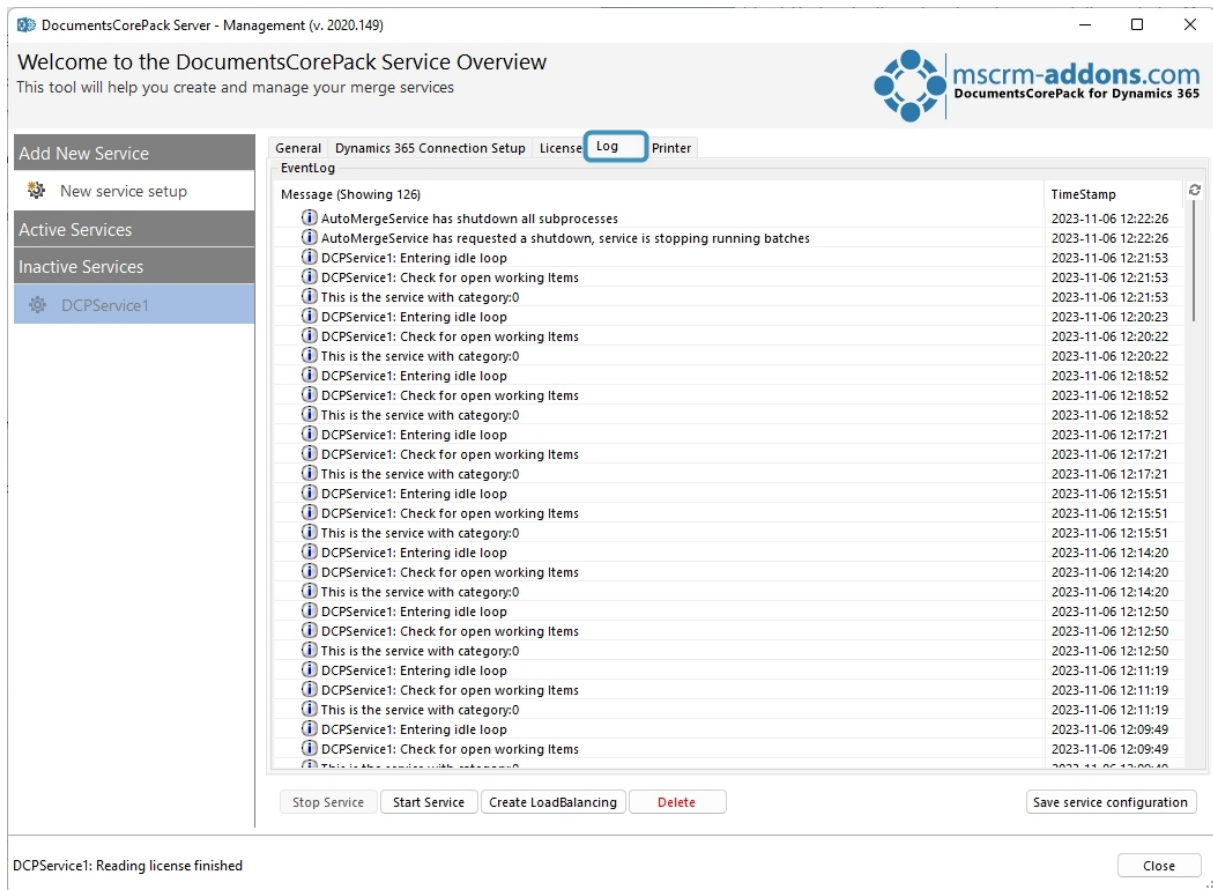
Stop Service Start Service Create LoadBalancing Delete Licensing Save service configuration

DCPService1: Reading license finished Close

Figure 26: The license tab

2.15.5. The Log tab

In the **Log** tab, you can observe the latest events and changes.



DocumentsCorePack Server - Management (v. 2020.149)

Welcome to the DocumentsCorePack Service Overview
This tool will help you create and manage your merge services

mscrm-addons.com
DocumentsCorePack for Dynamics 365

General Dynamics 365 Connection Setup License **Log** Printer

EventLog

Message (Showing 126)

Message	TimeStamp
AutoMergeService has shutdown all subprocesses	2023-11-06 12:22:26
AutoMergeService has requested a shutdown, service is stopping running batches	2023-11-06 12:22:26
DCPService1: Entering idle loop	2023-11-06 12:21:53
DCPService1: Check for open working Items	2023-11-06 12:21:53
This is the service with category:0	2023-11-06 12:21:53
DCPService1: Entering idle loop	2023-11-06 12:20:23
DCPService1: Check for open working Items	2023-11-06 12:20:22
This is the service with category:0	2023-11-06 12:20:22
DCPService1: Entering idle loop	2023-11-06 12:18:52
DCPService1: Check for open working Items	2023-11-06 12:18:52
This is the service with category:0	2023-11-06 12:17:21
DCPService1: Entering idle loop	2023-11-06 12:17:21
DCPService1: Check for open working Items	2023-11-06 12:17:21
This is the service with category:0	2023-11-06 12:17:21
DCPService1: Entering idle loop	2023-11-06 12:15:51
DCPService1: Check for open working Items	2023-11-06 12:15:51
This is the service with category:0	2023-11-06 12:15:51
DCPService1: Entering idle loop	2023-11-06 12:14:20
DCPService1: Check for open working Items	2023-11-06 12:14:20
This is the service with category:0	2023-11-06 12:14:20
DCPService1: Entering idle loop	2023-11-06 12:12:50
DCPService1: Check for open working Items	2023-11-06 12:12:50
This is the service with category:0	2023-11-06 12:12:50
DCPService1: Entering idle loop	2023-11-06 12:11:19
DCPService1: Check for open working Items	2023-11-06 12:11:19
This is the service with category:0	2023-11-06 12:11:19
DCPService1: Entering idle loop	2023-11-06 12:09:49
DCPService1: Check for open working Items	2023-11-06 12:09:49
This is the service with category:0	2023-11-06 12:09:49

Stop Service Start Service Create LoadBalancing Delete Save service configuration

DCPService1: Reading license finished Close

Figure 27: The log tab

2.15.6. The Printer tab

DocumentsCorePack now offers a service-based printing option, which is available in addition to the already known plugin-based printing option. The additional option is available within DocumentsCorePack for MS Dynamics CRM 2013 v5.30 and higher and is based on a service that runs in the background. [Learn more.](#)

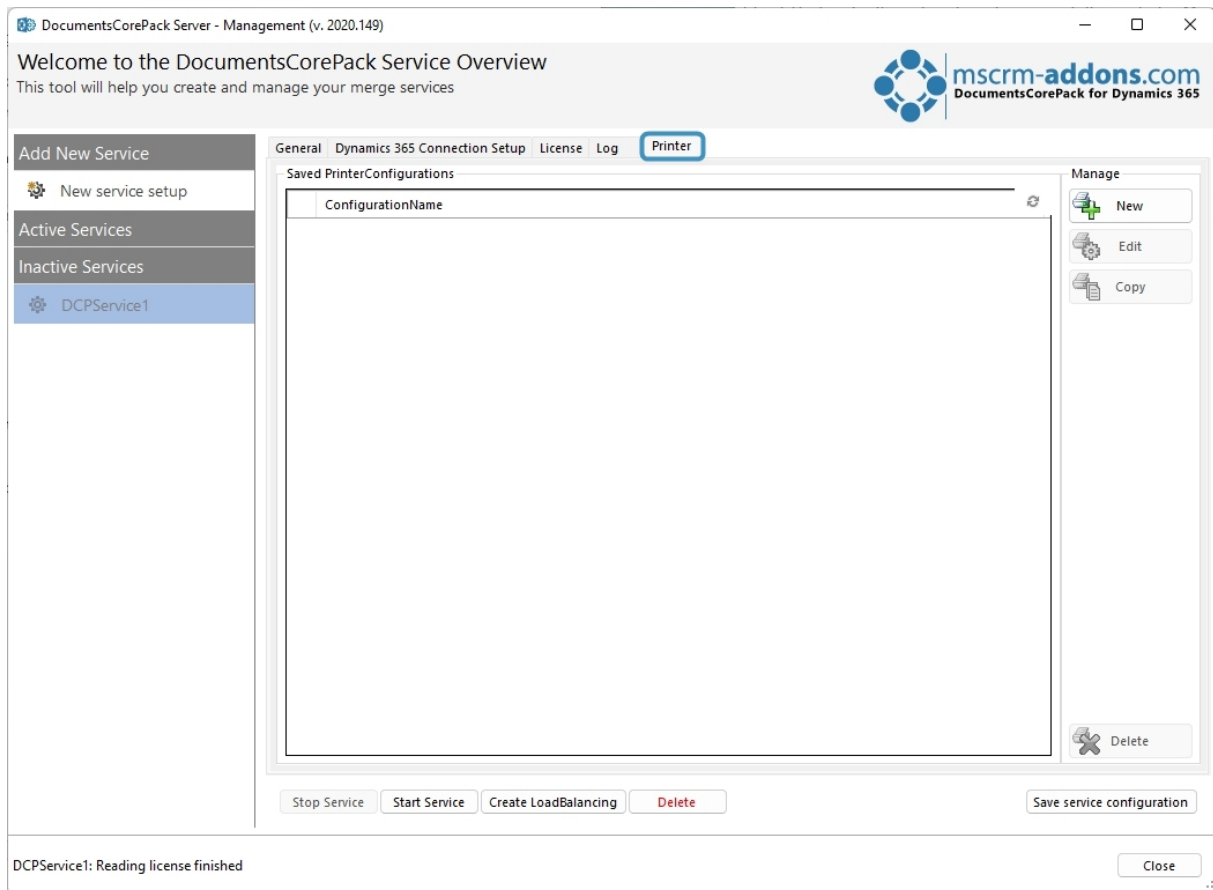


Figure 28: Printer tab

2.15.7. Create a Load Balancing service

Load Balancing plays a crucial role in ensuring the scalability, availability, and performance of DocumentsCorePack services. Further information regarding the impact of Load Balancing can be found [here](#).

Please note: Load Balancing requires a license that can be optionally added to your subscription. Please contact sales@mscrm-addons.com for details.

To create a Load Balancing service for DocumentsCorePack, click on the **1 Create LoadBalancing** button while your **2** service is inactive.

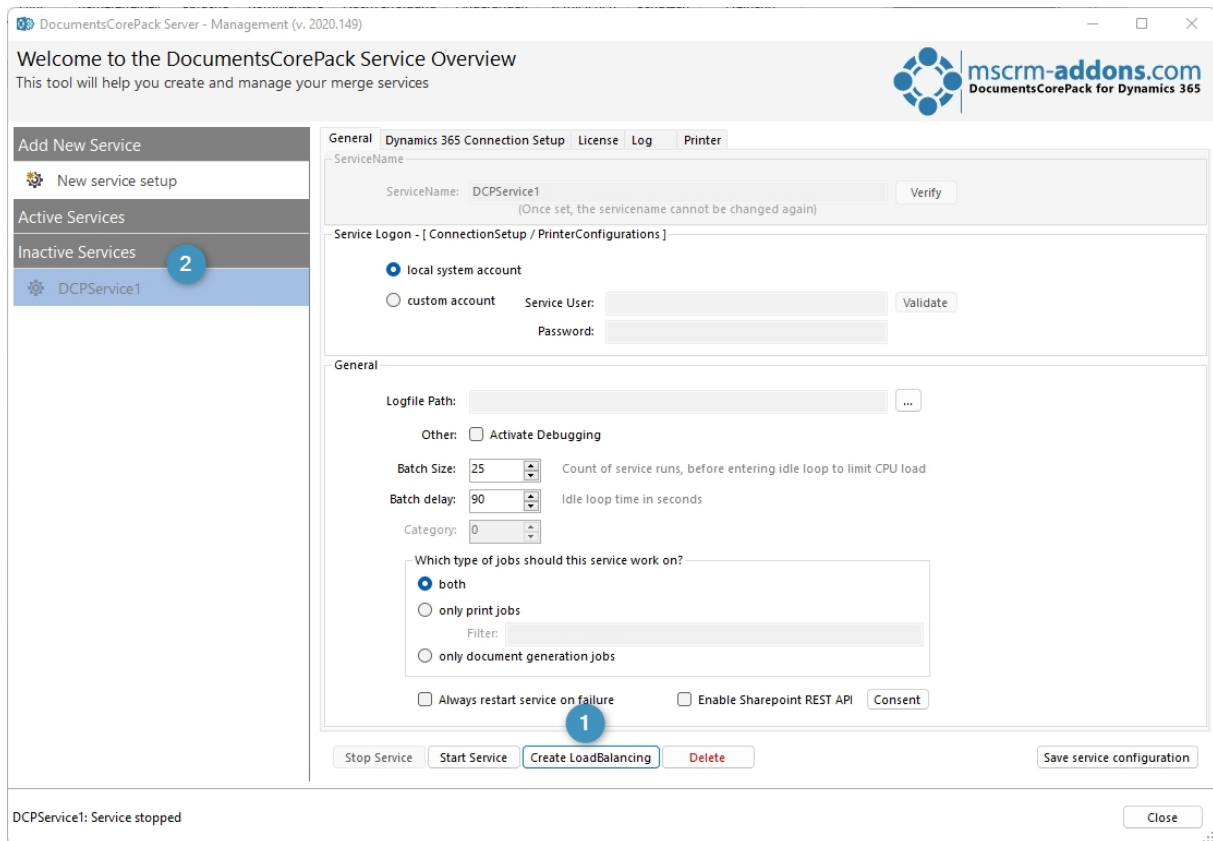


Figure 29: Create LoadBalancing service for DCP on premise

In the configuration dialog, define the ① number of load balancing services and the ② number of services reserved for single documents. ③ **Push Logic**, which is enabled by default, improves load balancing performance and should not be disabled (contact support for more information).

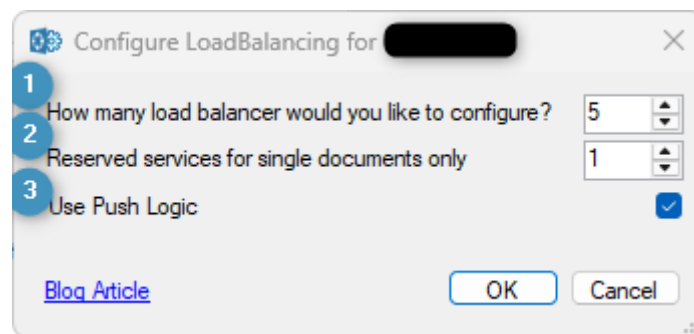


Figure 30: Configure LoadBalancer services

This dialog appears to confirm your changes, click **YES**.

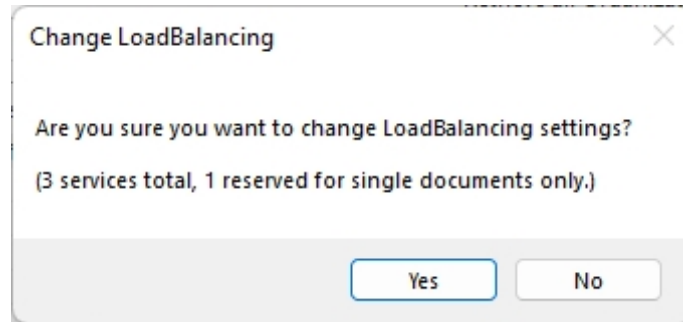


Figure 31: Confirm changes

A **1** DocumentsCorePack Load Balancing service with **2** multiple subservices is created. Don't forget to **3** **Save service configuration** and **Start the Service**.

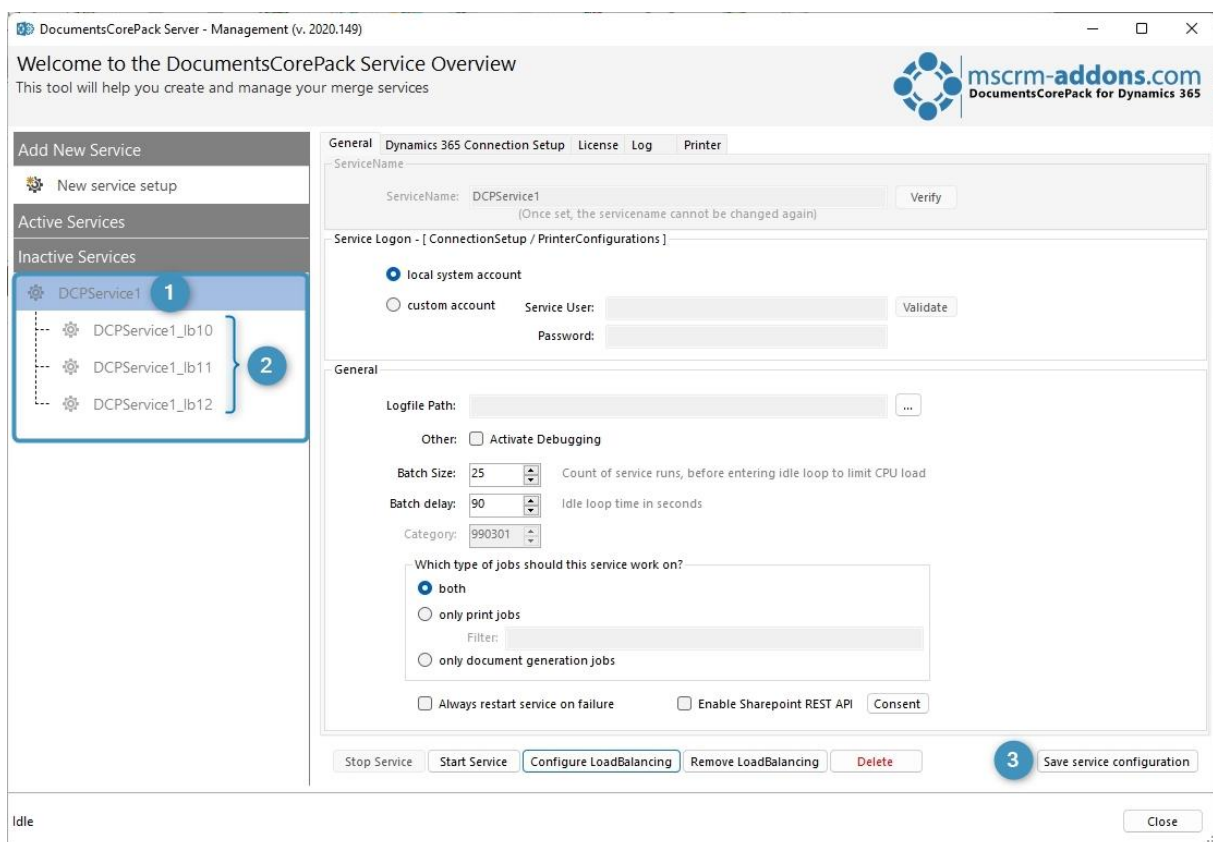


Figure 32: Load Balancing service & subservices

Please note:

- When starting the load balancing service, the subservices will automatically start as well.
- If you activate debugging, a Logfile path is created automatically. If you want to specify your own path, keep in mind that each load balancing service needs its own path.

1.7. Licensing

Learn in [this guide](#) all about licensing for Microsoft Dynamics 365.

1.8. Upgrade

To upgrade your DocumentsCorePack version, simply re-run the setup (find the newest version [here](#)).

The final step of the upgrade is to execute the DocumentsCorePack Configuration as shown in chapter [2.11. Client & Server Based generation settings](#). The configuration is necessary to upgrade DocumentsCorePack properly!

3. How to install DocumentsCorePack in an IFD/Claims-based environment

In this chapter we will walk you through the required steps to install DocumentsCorePack in an IFD/Claims-based environment.

You need to have the following downloads present to successfully setup the addon:

- IFD-Tool ([Download Link](#)). You need to login on our web site.
- For installing DocumentsCorePack you need at least version 5.18 from our [Download Section](#)

Before you start installing, Dynamics 365 is required to be working correctly in IFD/Claims-Mode, including your ADFS, which should be installed correctly and configured to work with Dynamics 365.

More details on how to configure MSCRM for IFD/Claims can be found in the Microsoft Guide "Configuring Claims-based Authentication for Microsoft Dynamics CRM 2011" Download.

The following system configuration is the basis for our guide. Your setup will differ from these URLs, so make sure you are replacing the URLs with your own when following the guide.

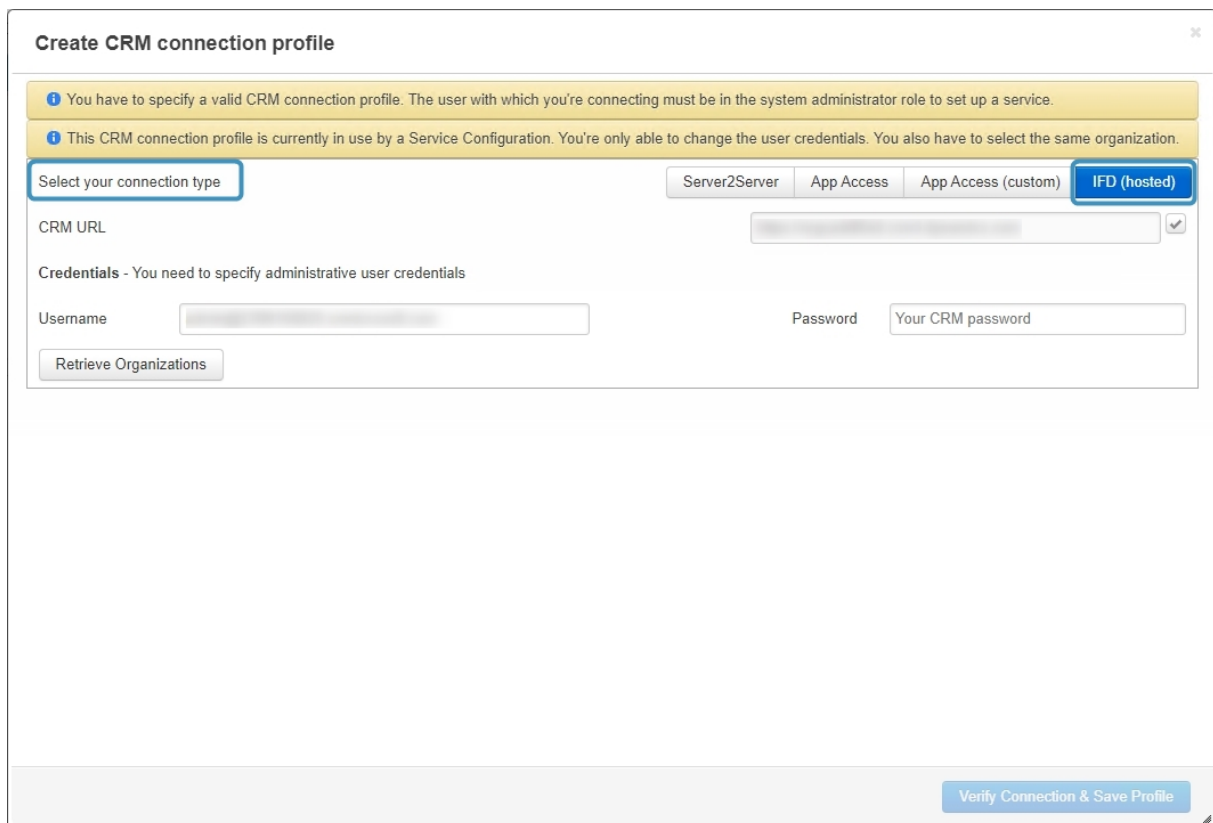
- Internal URL used to access Microsoft Dynamics CRM:
https://internalcrm.rc1ifd.ptm-edv.at
- External URL used to access Microsoft Dynamics CRM:
https://[orgname].rc1ifd.ptm-edv.at
- AD FS Server: <https://win2008domain.ptm-edv.at>
- The Addon itself also requires a DNS name:
https://documentscorepackserver.rc1ifd.ptm-edv.at

A step-by-step description for a Basic installation/configuration of our addon

Please note: There is no IFD Configuration required for DocumentsCorePack for MS CRM 2015 Installation.

Step 1: Install the addon on the Dynamics 365 Server.

Step 2: You will be asked for the login information. Fill in the internal IFD name of your Dynamics 365. In our case it is **internalcrm.rc1ifd.ptm-edv.at**. Select the organization on which you want to install the addon and click **OK**.



Create CRM connection profile

1 You have to specify a valid CRM connection profile. The user with which you're connecting must be in the system administrator role to set up a service.

1 This CRM connection profile is currently in use by a Service Configuration. You're only able to change the user credentials. You also have to select the same organization.

Select your connection type

Server2Server App Access App Access (custom) **IFD (hosted)**

CRM URL ✓

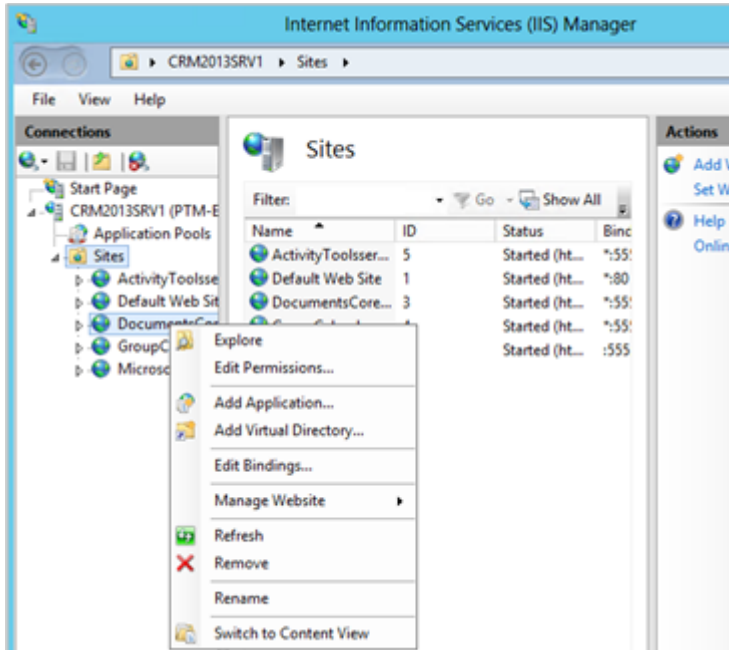
Credentials - You need to specify administrative user credentials

Username Password

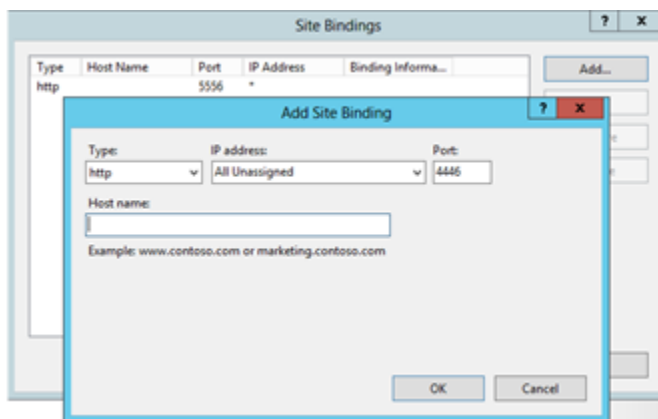
Retrieve Organizations

Verify Connection & Save Profile

Step 3: After the installation is finished, you must open the IIS (inetmgr.exe) and go to Sites → the Addon Website. Right click the DocumentsCorePackserver - WebSite and select **Edit Bindings...**



Step 4: On the bindings click on **Add...** and select **https** in the **Add Site Binding**. You also must specify the port. In our example we use 4446. Now the web site is available for https. Click on the **OK** button.



Step 5: Reselect the addon website and double click on the "Authentication" item in the details pane on the right-side. Verify that the "Anonymous" and "ASP.Net Impersonation" settings are enabled.

Step 6: The addon URL needs to be added to your DNS Server. Your DNS-servers must resolve the **documentscorepackserver.[your-domain]** names correctly. That means that they should resolve it with the same IP address as your Dynamics 365 Server. If you have an external DNS, make sure that both the external and the internal DNS can resolve the URL.

Step 7: Extract the IFD-Tool (zip-file) that you downloaded before and execute the **IFDSetupWizard.exe**. Follow the steps in the IFD Setup carefully.

Step 8: Open your Dynamics 365 and go to "Settings" and then "MSCRMADDONS.com Products". Open the addon in the MSCRM-ADDONS.com products section, and then select the MSCRM-ADDONS.com Settingskeys and search for the "WebApplicationPort" entry.

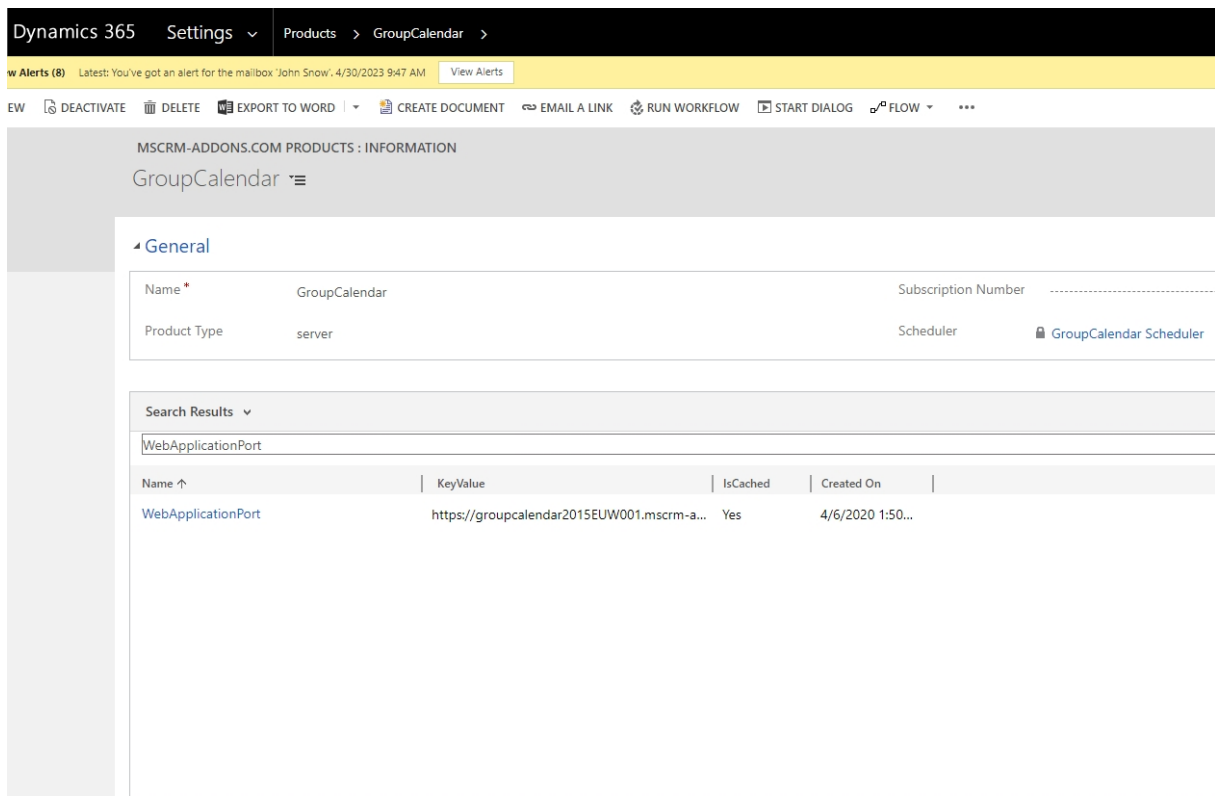


Figure 33: WebApplicationPort entry

Step 9: Open the **WebApplicationPort** and replace the existing KeyValue with the following: **[httpsPort]|[httpPort]|[claimsbased]|[addonname]|[debugging]**

Example: **4446|5557|true|activitytoolserver>false**

We have finished the configuration of the Dynamics 365 part and now need to configure the **AD FS**.

Step 10: Please log onto your AD FS Server and start AD FS 2.0 Management.

Step 11: On the action menu located in the right column, click **Add Relying Party Trust**.

Step 12: In the **Add Relying Party Trust** wizard, click **Start**.

Step 13: On the **Select Data Source** page, click **Import data about the relying part published online or on a local network** and then type in the URL to locate the **federationmetadata.xml** file.

This federation metadata is created with the IFD tool on the Dynamics 365 server.

Step 14: Type this URL in your browser and verify that no certificate-related warnings appear and click **Next**.

Step 15: On the **Specify Display Name** page, type in a display name, such as **DocumentsCorePack IFD**, and click on **Next**.

Step 16: On the **Choose Issuance Authorization Rules** page, leave the **Permit all users to access this relying party** option selected and then click **Next**.

Step 17: On the **Ready to Add Trust** page, click **Next** and then **Close**.

Step 18: If the **Rules Editor** appears, click on **Add Rule**. Otherwise, in the **Relying Party Trusts** list, right-click the relying party object that you created, click **Edit Claims Rules** and then click **Add Rule**.

Important: Be sure that the **Issuance Transform Rules** tab is selected.

Step 19: In the **Claim rule template** list, select the **Pass Through or Filter an Incoming Claim** template, and then click **Next**.

Step 20: Create the following rule:

- **Claim rule name:** Pass Through UPN (or something descriptive)
- Add the following mapping:
 - Incoming claim type: UPN
 - Pass through all claim values

Step 21: Click **Finish**.

Step 22: In the **Rules Editor**, click **Add Rule**.

Step 23: In the **Claim rule template** list, select the **Transform an Incoming Claim** template and then click **Next**.

Step 24: Create the following rule:

- Claim rule name: Transform Windows Account Name to Name (or something descriptive)
- Add the following mapping:
 - Incoming claim type: Windows account name
 - Outgoing claim type: Name
 - Pass through all claim values

Step 25: Click **Finish** and when you have created all three rules, click on **OK** to close the **Rules Editor**.

You have now finished the configuration and you should be able to use the addon in your IFD/Claims environment now.

4. Troubleshooting

If you see the following error message, there may be two reasons for this:

Reason 1: You may be using a wrong certificate for the AD FS signing. Make sure the thumbprint in the web.config matches the one of the token signing certificate in AD FS.

```
<issuerNameRegistry
type="Microsoft.IdentityModel.Tokens.ConfigurationBasedIssuerNameRegistry,
Microsoft.IdentityModel, Version=3.5.0.0, Culture=neutral,
PublicKeyToken=31bf3856ad364e35">
  <trustedIssuers>
    <add thumbprint="37a59abae1a394ffd8f0fd750c2e38e98069e349"
name="http://win2008domain.ptm-edv.at/adfs/services/trust" />
  </trustedIssuers>
</issuerNameRegistry>
```

Reason 2: This error could also indicate access rights problems with the certificates private key (mainly an issue for self-signed certificates).

Open your certificate store on the server (MMC, add certificate snap-in for local computer) and find your HTTPS certificate. In the context menu, under all tasks, select the **manage private keys** option and grant access to everyone.

Checklist for general troubleshooting:

- Is the Setting WebApplicationPort still intact?
- Are there not any http/https bindings in Dynamics 365?
- Are there not any http/https bindings in the product's website?
- Is the DNS correctly resolving the products link?
- Has the ConnectionProfile been created with IFD as the connection type?

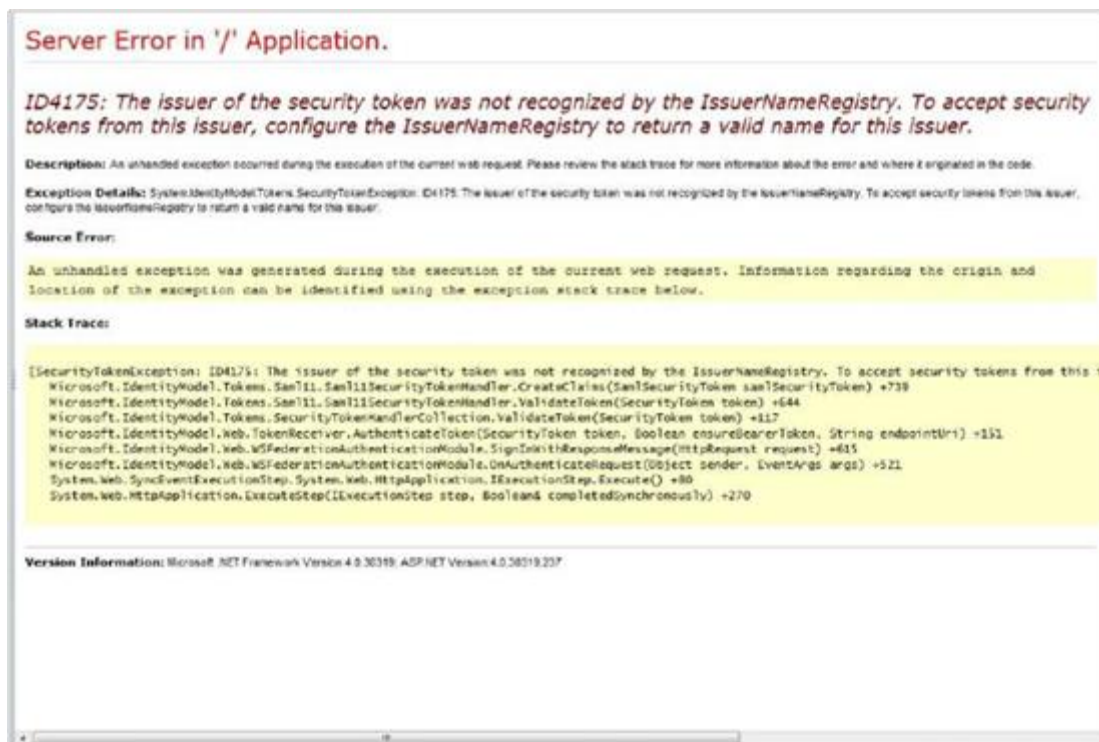


Figure 34: Server Error - message

5. Windows 12 WIF Framework installation (WindowsIdentityFoundation)

Windows Identity Foundation is included with the operating system (Windows Server 2012 R2, Windows Server 2012 and Windows 8.1) as a feature in turning Windows features on or off.

If you didn't previously install WIF, then you should follow these steps:

Step 1: Start by running the **Server Manager**, if it is not already open, by either of these two options:

Step 2: On the Windows taskbar, click the Server Manager button.

Step 3: On the Start screen, click the Server Manager button.

Step 4: Under the Manage menu, select Add Roles and Features (or press Add roles and features under the Dashboard panel).

Step 5: On the Before You Begin screen, click **Next**.

Step 6: On the Installation Type screen, select Role-based or Feature-based Installation and click **Next**.

Step 7: On the Server Selection screen, select the appropriate server, leave the default options, and click **Next**.

Step 8: On the Server Roles screen, click Next.

Step 9: On the Features screen, select **Windows Identity Foundation 3.5** and click **Next**.

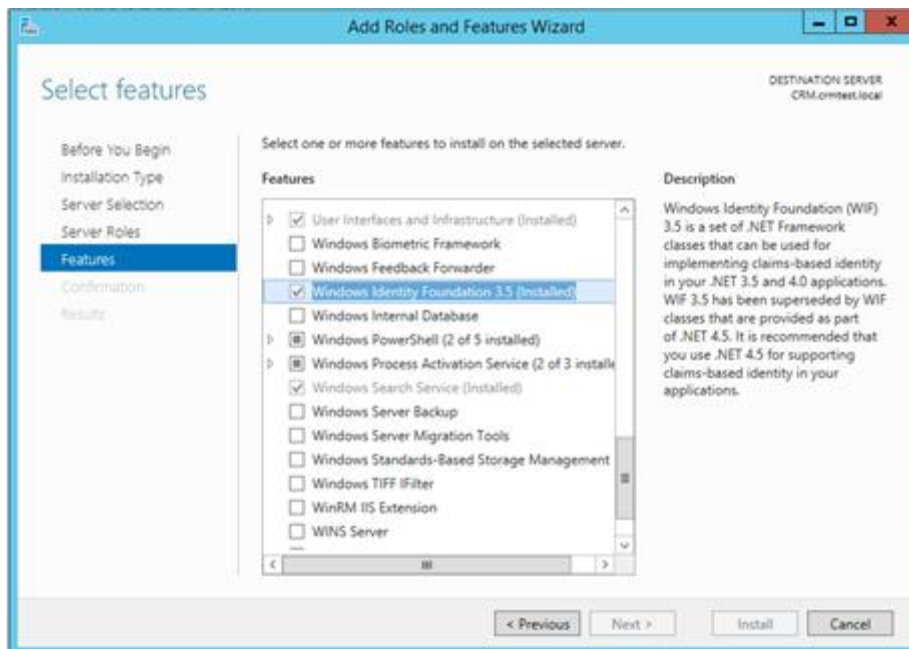


Figure 35: Windows features - WindowsIdentityFoundation 3.5

Step 10: On the confirmation screen, select **Restart the destination server automatically if required** and click **Install**:

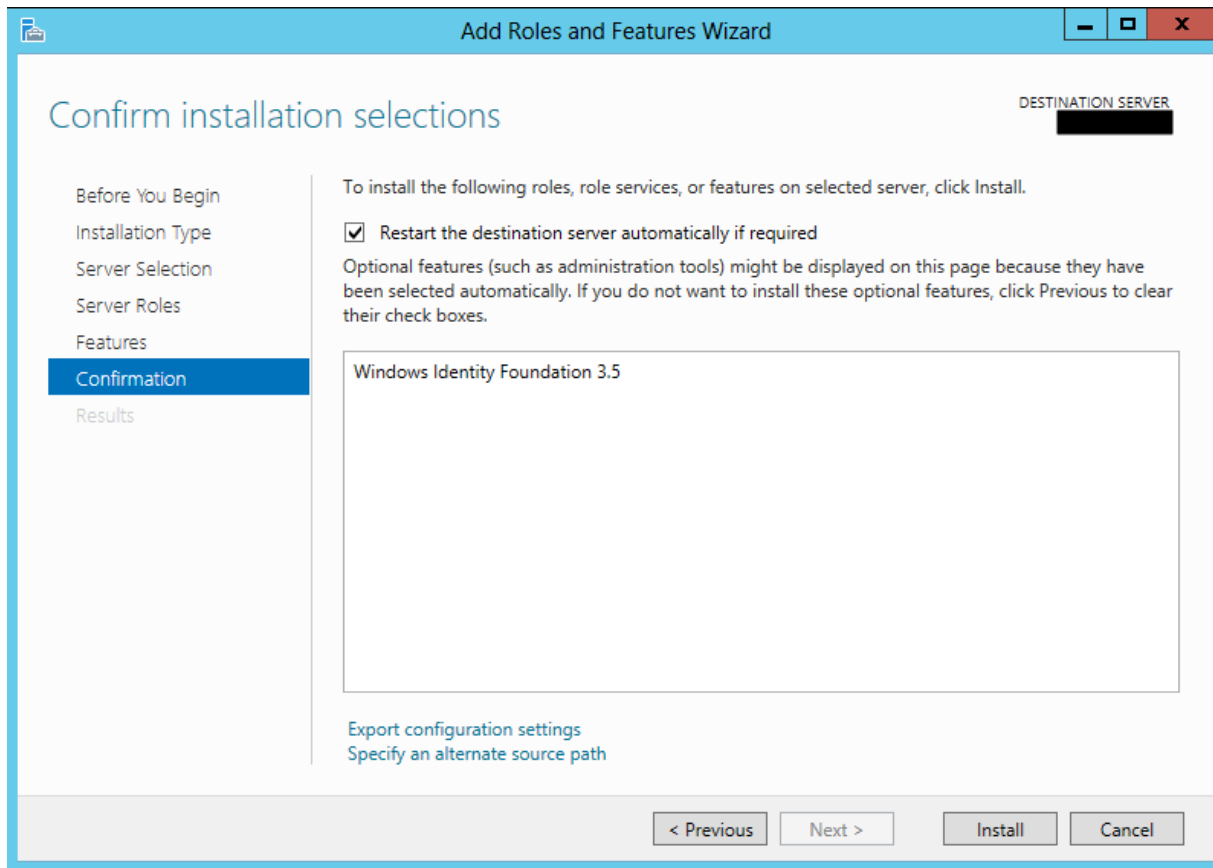


Figure 36: Confirm installation selection

Step 11: When the installation is completed, the wizard reflects the installation status on the Results screen

Step 12: Click **Close** to exit the wizard.

6. DocumentsCorePack Templates

DocumentsCorePack templates are predefined Word templates that have some DocumentsCorePack merge fields in it. You can define several templates for each Microsoft Dynamics 365 entity (For example: account, contact, etc.).

Example: You created an "Account reconnect" template that should be used to send information to accounts. Once created and stored, every Microsoft Dynamics 365 user can generate "Account reconnect" letters based on this template.

Please note: Some basic templates like "Account Reconnect", "Gift Certificate" for contacts, and "quote" templates come with the installation of DocumentsCorePack.

1.9. How to create DocumentsCorePack templates

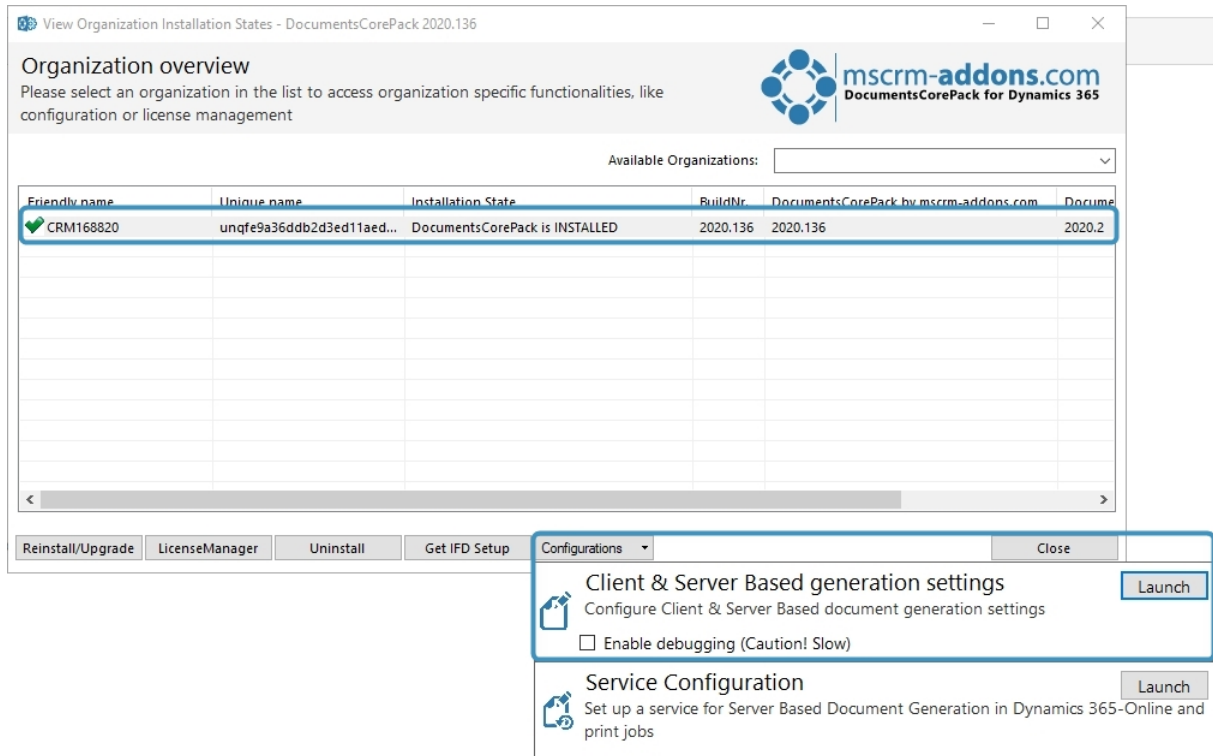
Please read the corresponding [User Guide](#) (chapter 5.1 How to create DocumentsCorePack templates) for more information about the creation of DocumentsCorePack templates.

1.10. Import/export existing DocumentsCorePack templates

Open your DocumentsCorePack Server Configuration and choose the organization for which you want to import/export the Templates and click on the **OK** button.



To open the **Organization overview** again, after closing, search in the Windows Start pane **Configuration – DocumentsCorePack for Dynamics 365**.



View Organization Installation States - DocumentsCorePack 2020.136

Organization overview
Please select an organization in the list to access organization specific functionalities, like configuration or license management

Available Organizations:

Friendly name	Unique name	Installation State	BuildNr	DocumentsCorePack by mscrm-addons.com	Docume
✓ CRM168820	unqfe9a36ddb2d3ed11aed...	DocumentsCorePack is INSTALLED	2020.136	2020.136	2020.2

Reinstall/Upgrade LicenseManager Uninstall Get IFD Setup Configurations Close

- Client & Server Based generation settings** [Launch](#)
Configure Client & Server Based document generation settings
 Enable debugging (Caution! Slow)
- Service Configuration** [Launch](#)
Set up a service for Server Based Document Generation in Dynamics 365-Online and print jobs

Figure 37: Click in the Organization overview Client & Server Based setting

This action will open the DocumentsCorePack Template Designer Configuration. Select the General Settings.

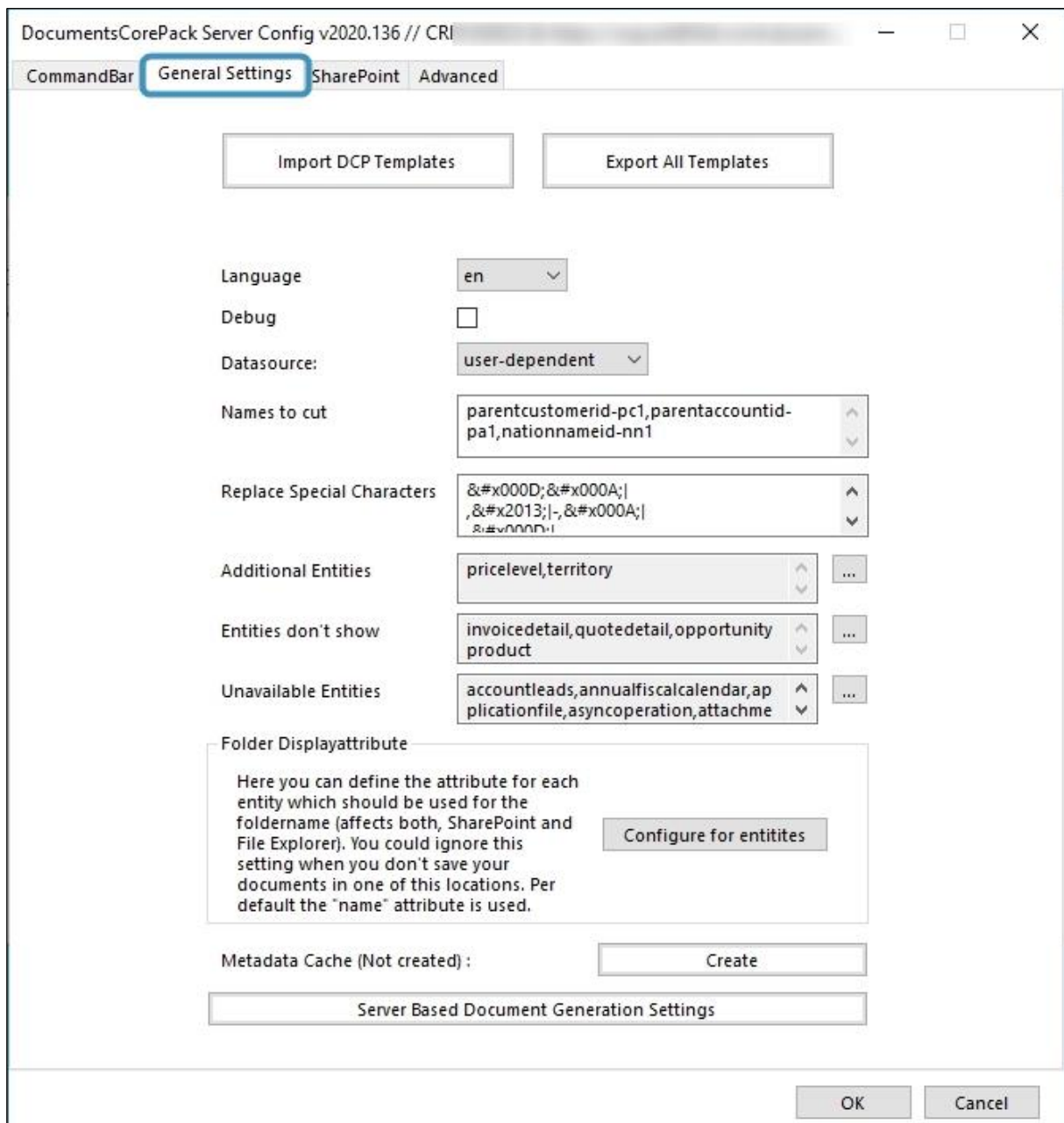


Figure 38: General Settings

From here you have the option to import and/or export templates. By clicking the **[Import DCP Templates]** button or the **[Export All Templates]** button, the Template Import Manager opens. It allows you to either import, export or transfer your DocumentsCorePack templates.

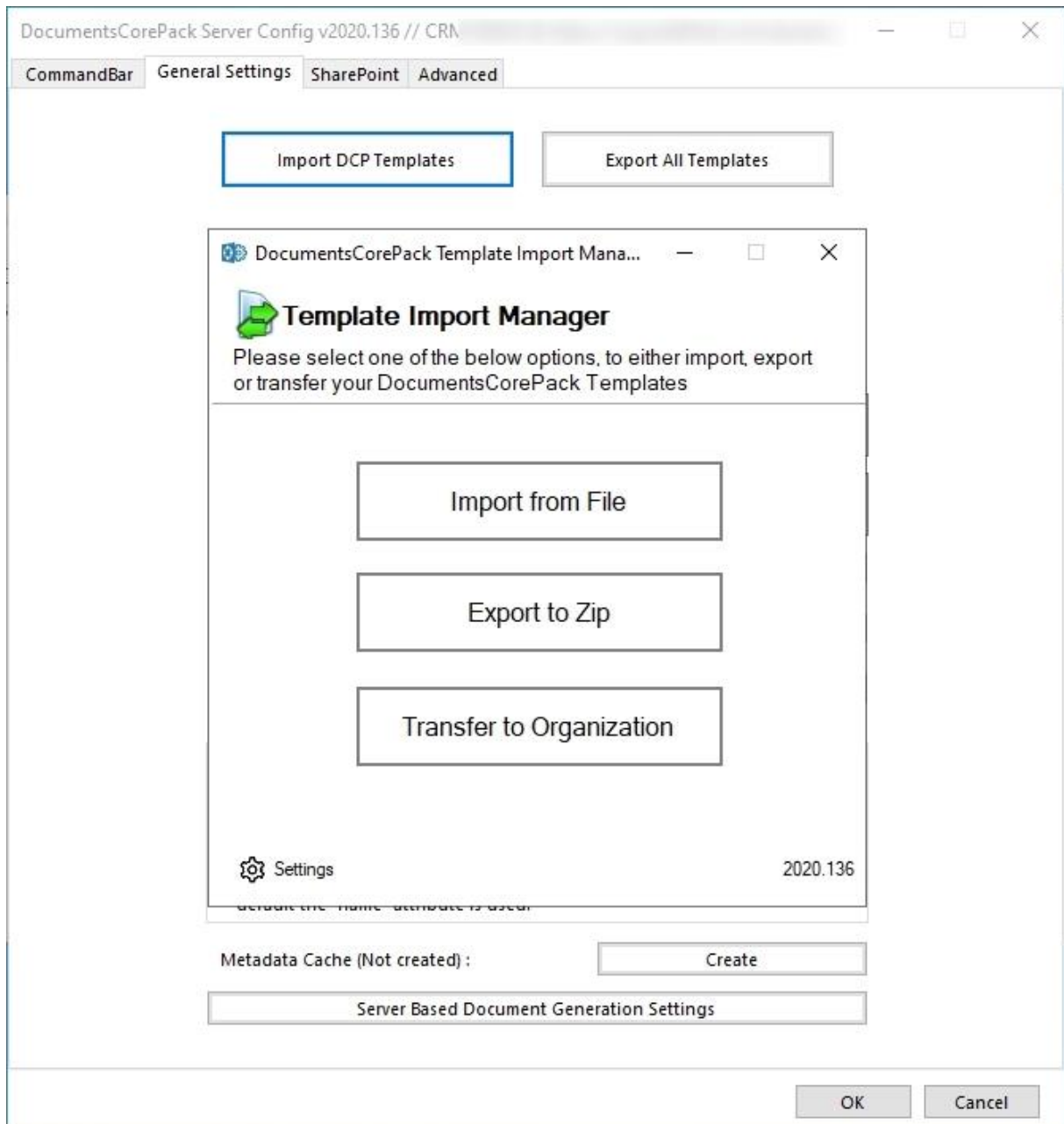


Figure 39: the template import manager

For more information about how the Template Import Manager works, please have a look at the [corresponding documentation](#) (Chapter 5 DCP Template Import Manager).

Now the templates are imported/exported in MS Word and ready to use. Next, go to the **www.msCRM-addons.com** to open the DocumentsCorePack Template Designer and click **Open Template**.

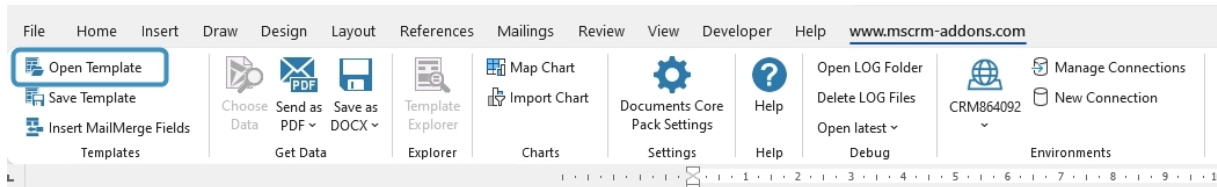


Figure 40: www.msCRM-addons.com - Open Template

7. Language Settings for DocumentsCorePack

The UI of DocumentsCorePack can be modified to any language. All UI display strings are stored in an XML File.

1.11. Language Settings in DocumentsCorePack Template Designer

This chapter outlines how to modify the language settings on the DocumentsCorePack Template Designer.

7.1.1. Location of the Language Settings in the DocumentsCorePack Template Designer

The name of the Language XML File is: **<language>.XML**

The language file is located in the sub folder localization of the DocumentsCorePack installation folder, typically under **C:\Program Files\PTM EDV Systeme GmbH\Documents Core Pack Client for Dynamics 365\Localization**.

Example: The Language file for the English UI is: en.xml

<Language setting> is the language code that DocumentsCorePack should use on the DocumentsCorePack Template Designer. Each DocumentsCorePack Template Designer can have its own language settings and files.

Please note: These language files can only be used if the set language is the same as the user language of your Dynamics 365 system.

7.1.2. Modify the UI on the DocumentsCorePack Template Designer

The UI language is determined during start up by the registry setting **Language**. To modify this setting, follow this procedure:

1. Press START – RUN.
2. Type **regedit** and click **OK**.
3. Locate the registry key **HKEY_LOCAL_MACHINE\Software\PTMEDVSysteme\DocumentsCorePackClient2018**.
4. **DocumentsCorePackClient2018**.
5. Change the value of the **language** setting to another language.
6. Close the registry editor.

Please note: To use a language other than English, you need to create a copy of the **en.xml** language file and rename it for a valid language setting. For example: To create a Dutch language file, rename the file to **nl.xml** and then translate the strings in the file.

After that, you must open the registry and change the value of the **language** setting to **nl**.

7.1.3. How to translate a language file

You can use a text editor or a generic XML editor to edit the language files.

The format of the XML tags in the language file is:

```
<!-- MENU/Toolbar Name -->

<LabelValues>
    <name>MenuMainCaption</name>
    <value>Microsoft CRM</value>
</LabelValues>
<LabelValues>
    <name>MenuMainToolTip</name>
    <value>Microsoft CRM</value>
</LabelValues>
<LabelValues>
    <name>btnchoosedata</name>
    <value>Choose CRM Data</value>
</LabelValues>
<LabelValues>
    <name>tooltipchoosedata</name>
    <value>Choose CRM Data for mail merge</value>
</LabelValues>
<LabelValues>
    <name>btncrmmailmerge</name>
    <value>CRM MailMerge</value>
</LabelValues>
```

You should **ONLY** modify the contents of the **<value>** tags. Do **not modify** the **<name>** tag.

1.12. Language Settings in Dynamics 365

This chapter outlines how to modify the language settings on the Server.

7.1.4. Location of the Language Settings in Dynamics 365

The UI of the DocumentsCorePack Server can be modified to any language. All UI display strings are stored in an XML File.

The name of the language XML File is: <language>.XML

The language file is located in the sub folder localization of the DocumentsCorePack installation folder, typically under "C:\Program Files\PTM EDV Systeme GmbH\Documents Core Pack Server for Dynamics365\Localization".

Example: The language file for the English UI is: **en.xml**

Please note: The language XML files from the server and client component are different. If you want to translate DocumentsCorePack, you must translate both files, the language file on the client and on the server.

Please note: To use a language other than English, you must create a copy of the "en.xml" language file and rename it for a valid language setting. For example: To create a Dutch language file, rename the file to "nl.xml" and then translate the strings in the file.

7.1.5. Location of the Language Settings in Dynamics 365

The UI of the DocumentsCorePack can be modified to any language. All UI display strings are stored in an XML File.

The name of the language XML File is: <language>.XML

The language file is located in the sub folder localization of the DocumentsCorePack installation folder, typically under **C:\Program Files\PTM EDV Systeme GmbH\Documents Core Pack Server for Dynamics365\Localization**.

Example: The language file for the English UI is: en.xml

Please note: The language XML files from the server and client component are different. If you want to translate DocumentsCorePack, you must translate both files, the language file in DocumentsCorePack Template Designer and in Dynamics 365.

Please note: To use a language other than English, you must create a copy of the "en.xml" language file and rename it for a valid language setting. For example: To create a Dutch language file, rename the file to "nl.xml" and then translate the strings in the file.

7.2.3. How to translate a language file

You can use a text editor or a generic XML editor to edit the language files.

The format of the XML tags in the language file is:

```
<!-- MENU/Toolbar Name -->
```

```
<LabelValues>
<name>MenuMainCaption</name>
<value>Microsoft CRM</value>
</LabelValues>
<LabelValues>
<name>MenuMainToolTip</name>
<value>Microsoft CRM</value>
</LabelValues>
<LabelValues>
<name>btnchoosedata</name>
<value>Choose CRM Data</value>
</LabelValues>
<LabelValues>
<name>tooltipchoosedata</name>
<value>Choose CRM Data for mail merge</value>
</LabelValues>
<LabelValues>
<name>btncrmailmerge</name>
<value>CRM MailMerge</value>
</LabelValues>
```

You should **ONLY** modify the contents of the **<value>** tags. Do **not modify** the **<name>** tag.

8. Important information

If you change the NamesToCut KEY, all OLD templates will be affected, because the merge fields are still stored with the long name in your old templates.

Example: You have an existing document with two merge fields:

parentaccountid_name and parentaccountid_fax

You change the setting to shorten parentaccountid to pc1. NEW Templates will be filled correctly! (Insert Mail Merge Fields inserts the correct short name into your template.)

All OLD templates which use merge fields, and which include parentaccountid will not work anymore! So, you must edit them! (One way to do so is by using the Replace

function of Word). Sometimes it will be better to replace full merge fields. So instead of changing just a part of a merge field, let DCP replace the whole one.

For example: From “customerid_contact_parentcustomerid_address1_fax” to

“cust_cont_par_adr1_fax”; Old templates won’t be affected, but you must add every field to the settings.

9. Uninstall DocumentsCorePack Server Component

To uninstall the DocumentsCorePack for Microsoft Dynamics 365, select **Programs and Features** in the Control Panel.

Search for the DocumentsCorePack for Dynamics 365 and with a right-click you can **Uninstall** DocumentsCorePack.

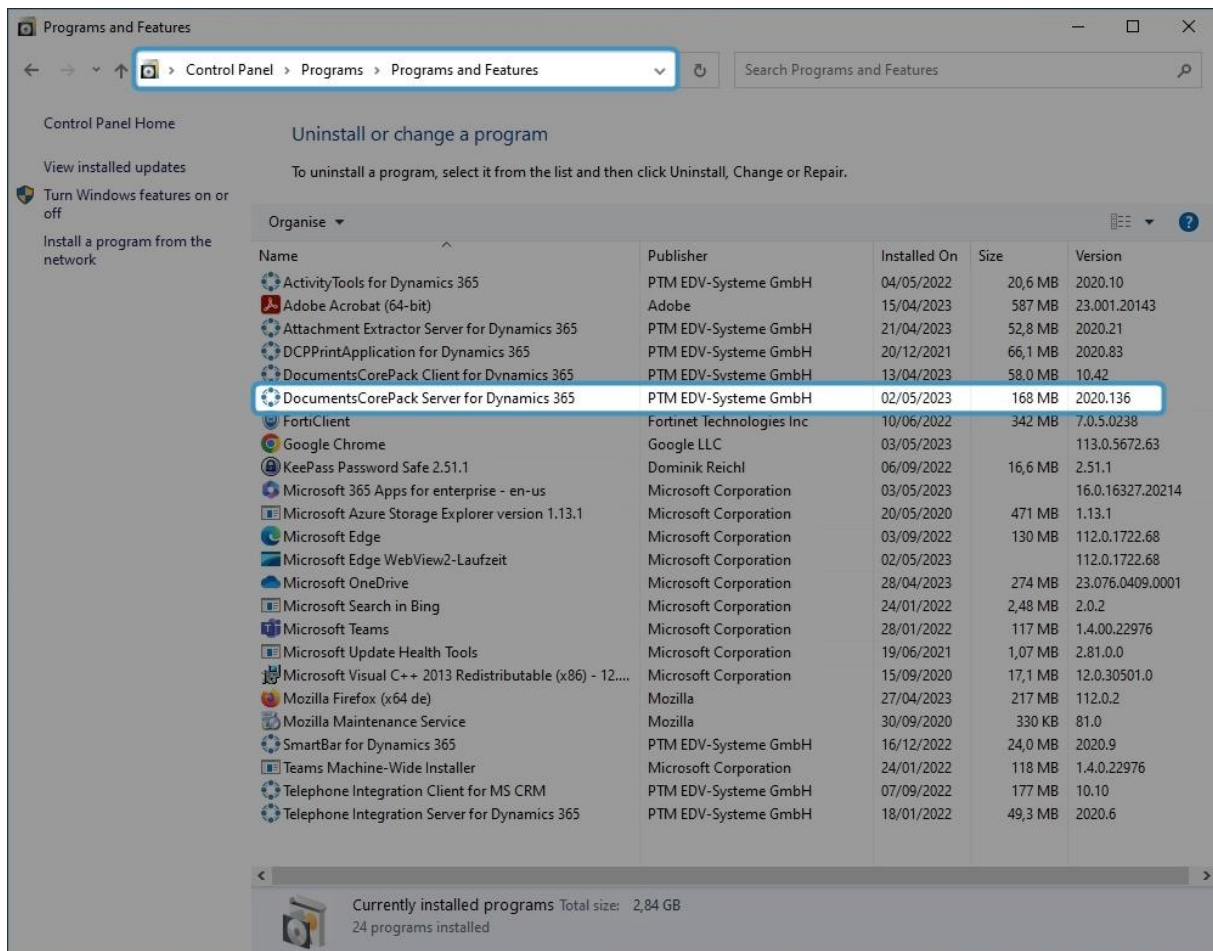
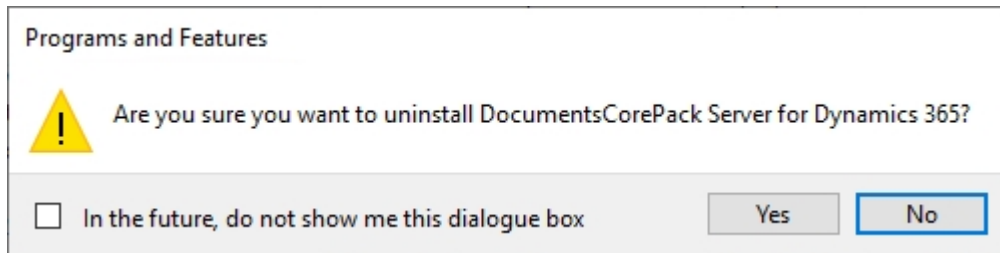


Figure 41: Uninstall DCP Server for Dynamics 365

Confirm your choice.



10. List of Figures

Figure 1: DocumentsCorePack installer for Dynamics 365	8
Figure 2: End User License Agreement (EULA)	9
Figure 3: Confirm with Install.....	10
Figure 4: Install the program	11
Figure 5: Install Windows Identify Foundation	12
Figure 6: Dynamics 365 Connection setup.....	13
Figure 7: Security roles	15
Figure 8: Default SharePoint configuration detected.....	16
Figure 9: Finish installation	17
Figure 10: Organization overview.....	18
Figure 11: Organization over - function buttons.....	19
Figure 12: Configurations	20
Figure 13: Client Based Document Generation	22
Figure 14: Ribbon and Navigation bar resources.....	23
Figure 15: Labels tab.....	23
Figure 16: Advanced template filtering	24
Figure 17: Save settings.....	25
Figure 18: Server Based Document Generation (Trial).....	26
Figure 19: Command bar configuration	27
Figure 20: General Settings tab	29
Figure 21: SharePoint tab	31
Figure 22: Look for ServiceManagement in the task pane	32
Figure 23: General tab.....	33
Figure 24: Dynamics 365 Connection Setup.....	34
Figure 25: The SharePoint tab	35
Figure 26: The license tab.....	36
Figure 27: The log tab	37
Figure 28: Printer tab.....	38
Figure 29: Create LoadBalancing service for DCP on premise	39
Figure 30: Configure LoadBalancer services	39
Figure 31: Confirm changes	40
Figure 32: Load Balancing service & subservices	40
Figure 33: WebApplicationPort entry	45
Figure 34: Server Error - message	48
Figure 35: Windows features - WindowsIdentifyFoundation 3.5.....	49
Figure 36: Confirm installation selection.....	50
Figure 37: Click in the Organization overview Client & Server Based setting	52
Figure 38: General Settings.....	53
Figure 39: the template import manager.....	54
Figure 40: www.mscrm-addons.com - Open Template	55
Figure 41: Uninstall DCP Server for Dynamics 365	60

11. Contact

For further technical questions, please visit our [blog](#) or contact support@mscrm-addons.com. For sales and licensing questions please contact office@mscrm-addons.com or the corresponding contact information below.



Headquarter – Europe

PTM EDV-Systeme GmbH
Bahnhofgürtel 59
A-8020 Graz
Austria

Tel Austria +43 316 680-880-0
Fax +43 316 680-880-25

Support:

7AM - 7PM GMT+1 (Monday-Friday)

Sales:

[+43 316 680 880 14](tel:+4331668088014)

sales@mscrm-addons.com

www.ptm-edv.at

www.mscrm-addons.com



Headquarter – US

mscrm-addons.com Corp
1860 North Rock Springs Rd
Atlanta, GA 30324
United States

Tel US +1 404 720 6066

Support:

9AM - 6PM EST (Monday-Friday)

Sales:

+1 404 720 6046

ussales@mscrm-addons.com

www.mscrm-addons.com