



**mscrm-addons.com**  
Your company for MS-CRM ADD-ONS!

# DocumentsCorePack Print Service for Microsoft Dynamics 365

---

v.0.1, June 2019

(How to install and configure DocumentsCorePack Print Service for Microsoft Dynamics 365)

The content of this document is subject to change without notice. "Microsoft" and "Microsoft Dynamics 365" are registered trademarks of Microsoft Inc. All other products- and company names mentioned are trademarks of their respectful owners.

CONTENT

- 1 Installation of DCPPrintService .....4
  - 1.1 Installation .....4
  - 1.2 End User License Agreement (EULA) .....4
  - 1.3 Change the installation folder.....5
  - 1.4 Confirm the installation.....5
  - 1.5 Connect to Dynamics 365 .....7
  - 1.6 Finish the installation .....8
- 2 DCPPrintService Configuration.....9
  - 2.1 The General-tab.....9
  - 2.2 The Printer-tab.....10
  - 2.3 The License-tab.....13
  - 2.4 The Log-tab.....13
- 3 List of figures.....14
- 4 Contact.....15

## Preamble

This documentation is intended to guide you through the installation of DocumentsCorePack Print Service in Microsoft Dynamics 365.

With DocumentsCorePack Print Service you have the possibility to set up one or more local printers, which can be used in Dynamics 365 via the DocumentsCorePack Dialog.

Please read this document carefully and follow the steps as described in order to achieve the best results.

## Target Audience

This guide is intended for users who would like to benefit from DocumentsCorePack Print Service and have the following minimum skills:

- Basic Microsoft Dynamics 365 Knowledge
- Maintaining and configuring a Microsoft CRM Organization

The installation consists of the following steps (follow each of the steps to complete the installation):

- Installing DocumentsCorePack Print Service for Microsoft Dynamics 365
- Configuring DocumentsCorePack Print Service for Microsoft Dynamics 365

## Prerequisites

Microsoft .NET Framework 4.6.2 is required

One of the following versions of Microsoft Dynamics CRM must be available:

- Microsoft Dynamics 365
- Microsoft Dynamics CRM Online

# 1 Installation of DCPPrintService

This chapter explains how to install the DCP Print Service. Before you start the installation, you have to download the DocumentsCorePack Print Service. You can download files [here](#).

## 1.1 Installation

Run the "DCPPrintService for Dynamics 365.exe" setup file. You will see the following window: Hit the **[Next >]**-button to continue with the license agreement.

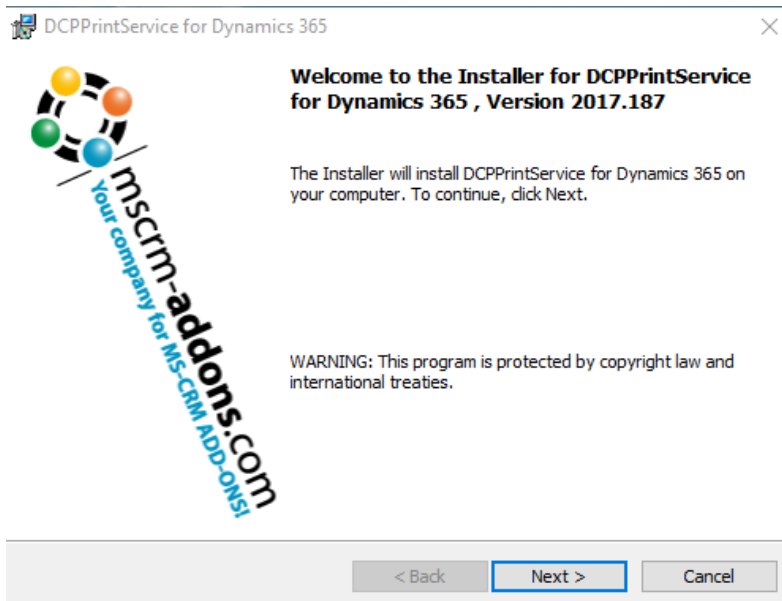


Figure 1: Installer DCPPrintService for Dynamics 365

## 1.2 End User License Agreement (EULA)

Please accept the license agreement by checking the first checkbox (highlighted in yellow) and click on the **[Next >]**-button.

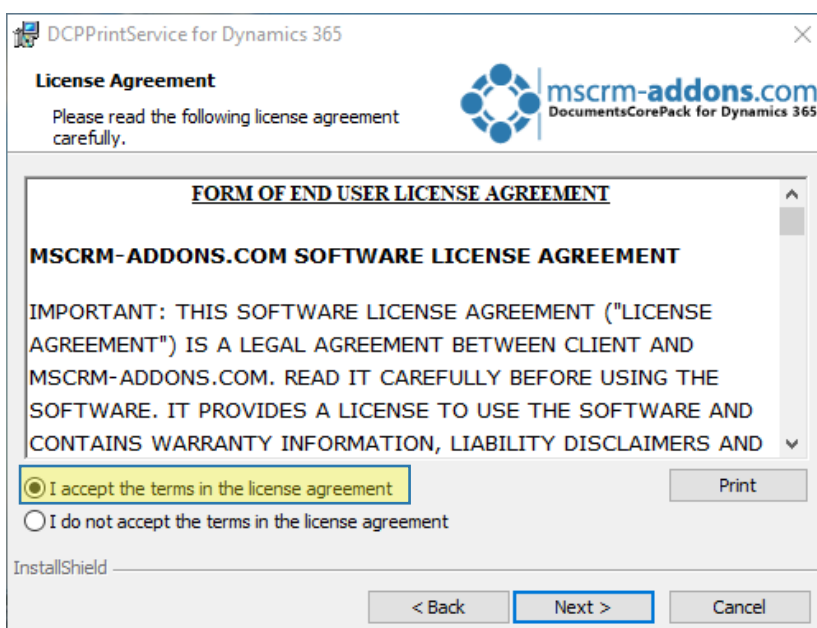


Figure 2: End User License Agreement (EULA)

### 1.3 Change the installation folder

If you want to change the installation folder please hit the ① **[Change]**-button to specify a different installation path. Click on the **[Next >]**-button to continue.

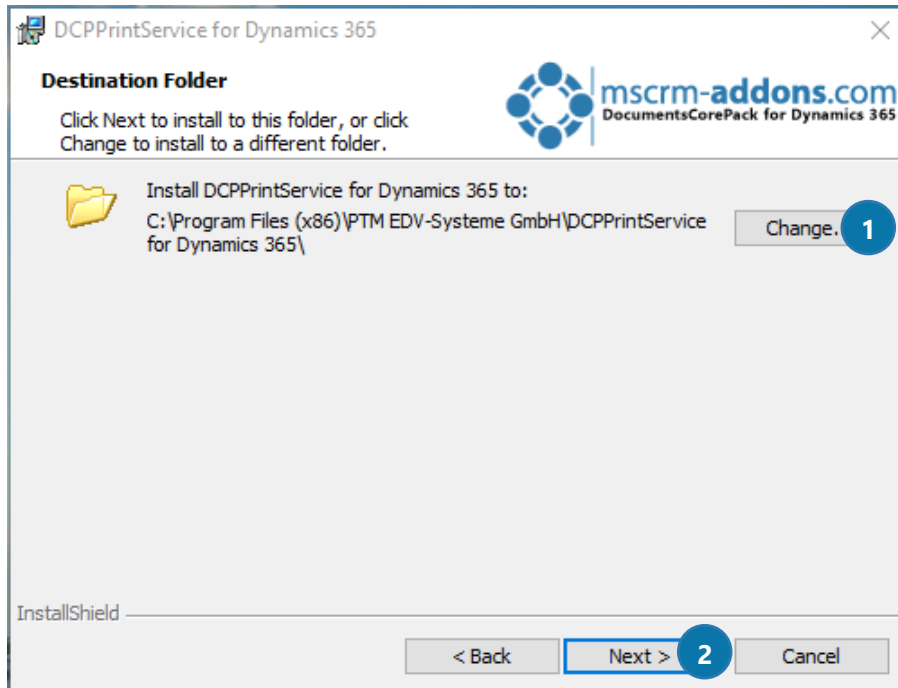


Figure 3: Change installation folder

### 1.4 Confirm the installation

Click on the ① **[Install]**-button to begin the installation as you can see in the figure below.

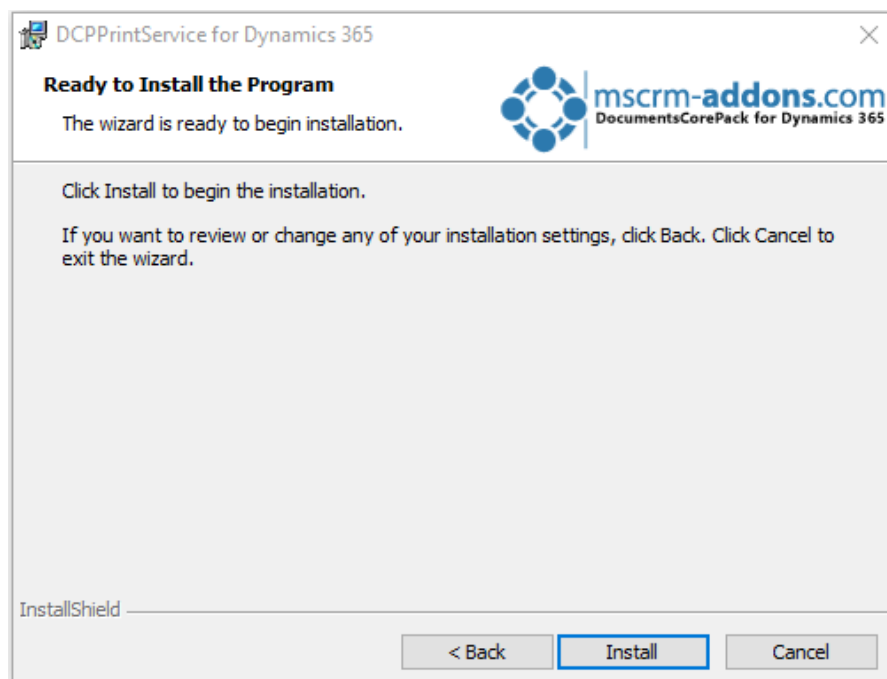


Figure 4: Confirm the installation

While the installation is running, the window below appears. This may take several minutes.

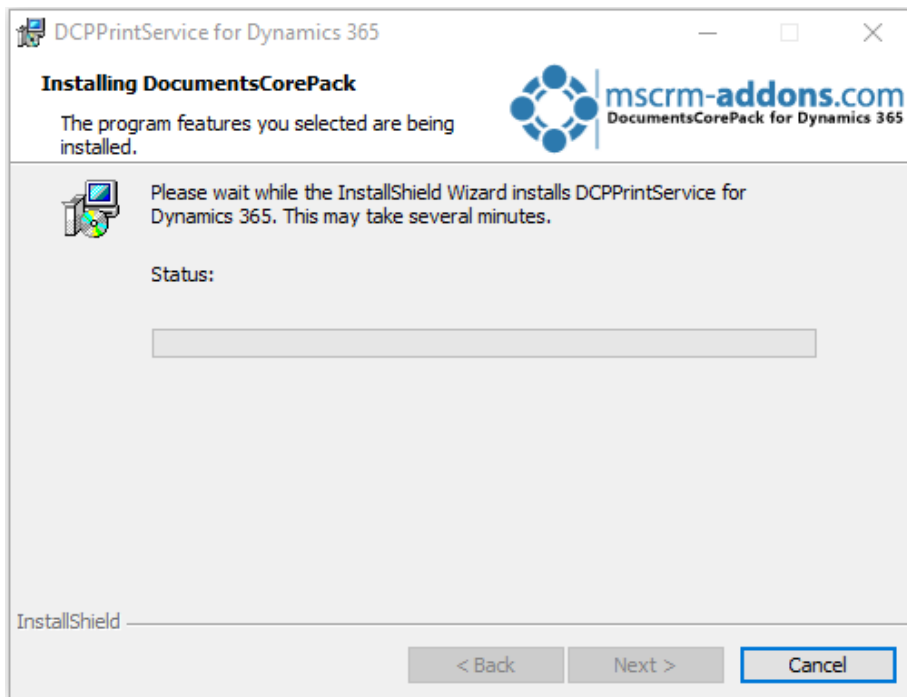
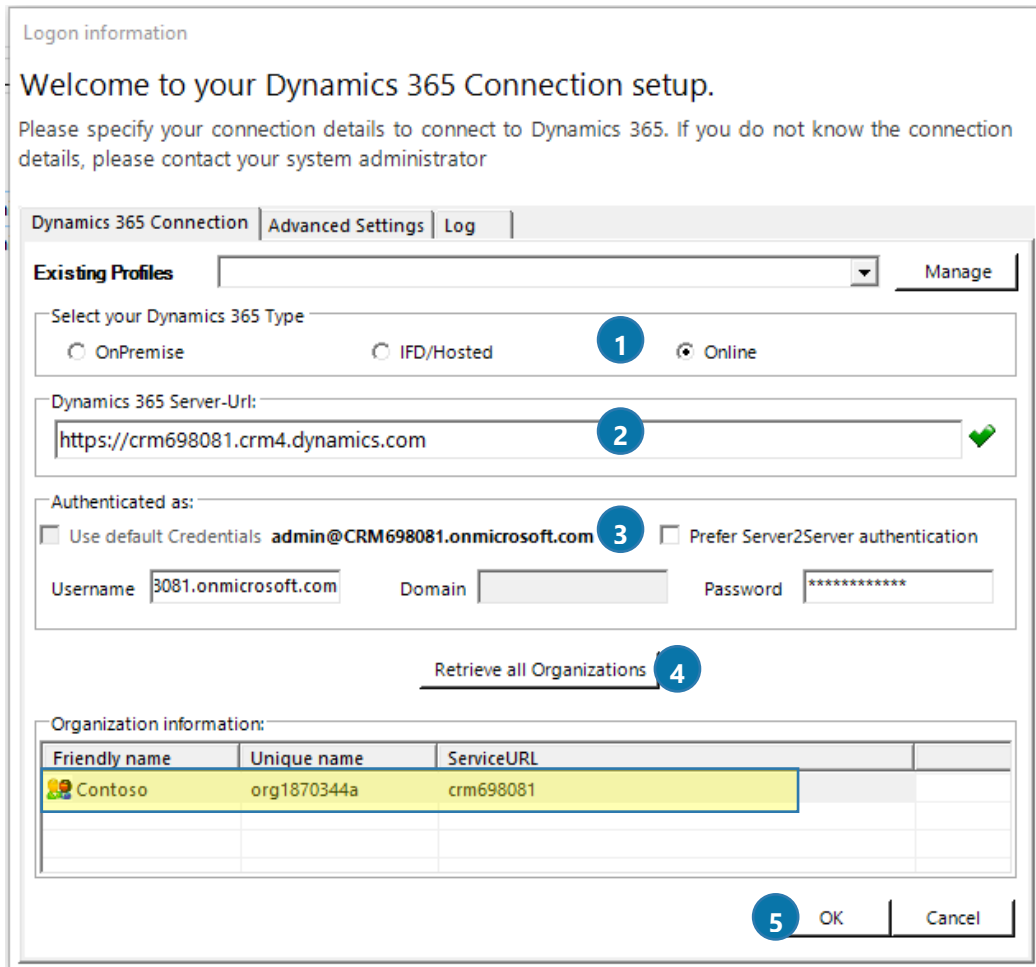


Figure 5: Installation status

## 1.5 Connect to Dynamics 365

Next, you have to configure your Dynamics 365 server. Therefore, you have to select your **1** Dynamics 365 Type (Online in this case), enter your **2** Dynamics 365-Url and add your login credentials by filling in the fields your **3** username and password.

Click on the **4** **[Retrieve all]**-button and as soon as the organizations are retrieved, choose one and press the **5** **[OK]**-button, as you can see in the figure below.



Logon information

Welcome to your Dynamics 365 Connection setup.

Please specify your connection details to connect to Dynamics 365. If you do not know the connection details, please contact your system administrator

Dynamics 365 Connection | Advanced Settings | Log

Existing Profiles  Manage

Select your Dynamics 365 Type

OnPremise  IFD/Hosted **1**  Online

Dynamics 365 Server-Url:

**2** ✓


Authenticated as:

Use default Credentials admin@CRM698081.onmicrosoft.com **3**  Prefer Server2Server authentication

Username  Domain  Password

**4** Retrieve all Organizations

Organization information:

Friendly name	Unique name	ServiceURL
 Contoso	org1870344a	crm698081

**5** OK Cancel

Figure 6: Dynamics 365 Connection setup

## 1.6 Finish the installation

The DCPPrintService Configuration will start automatically for the organization you selected during the setup. Click on **[Finish]** to continue.

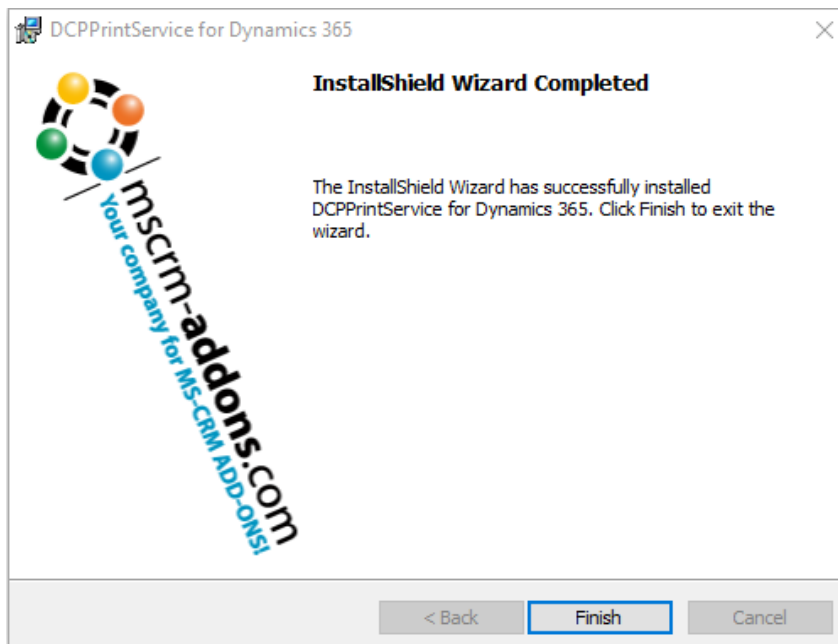


Figure 7: Finish installation



## 2 DCPPrintService Configuration

After finishing the installation, the DCPPrintService Configuration window opens. Within the following chapter, you will be provided with an overview of the different tabs and their functionality.

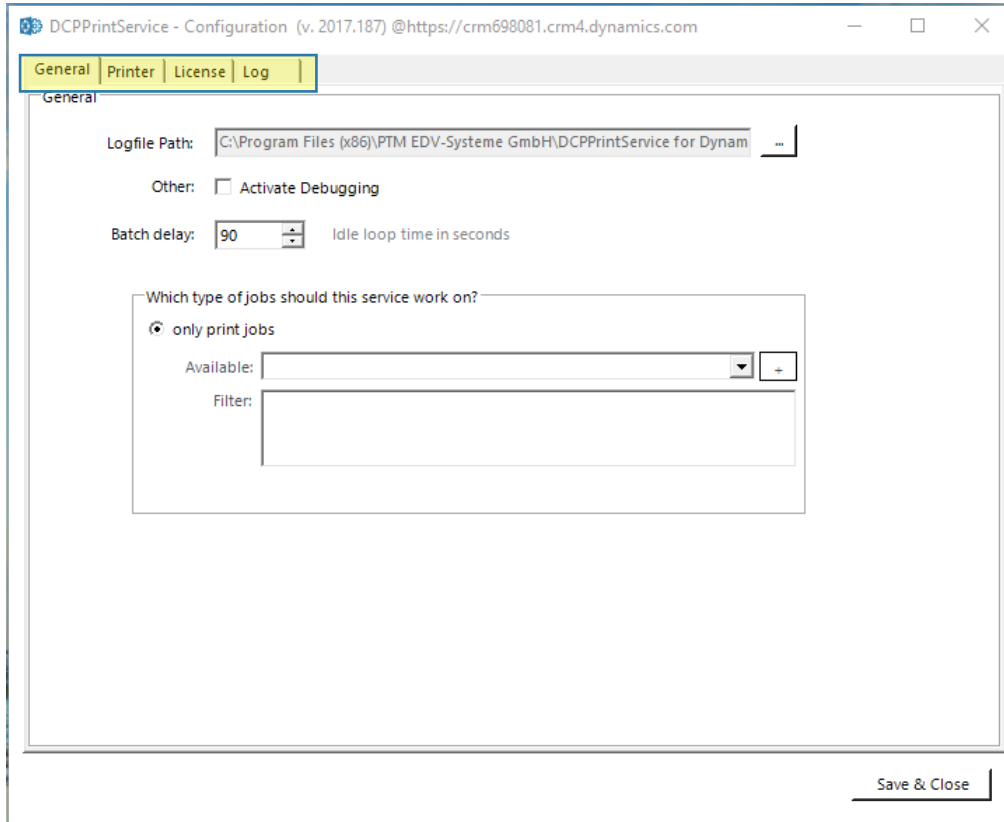


Figure 8: DCPPrintService Overview-tabs

### 2.1 The General-tab

The *General-tab* provides you with the opportunity to set the general settings of your future service (see figure above). Here you have the possibility to activate debugging, set a batch delay (90 seconds is set per default, which is the delay between the service checking for new print jobs).

You can also add & remove printers, that your service will use.

## 2.2 The Printer-tab

The *Printer*-tab provides you with the possibility to create a **1** new configuration, edit an existing one, copy a configuration and change the settings and also to **2** delete configurations.

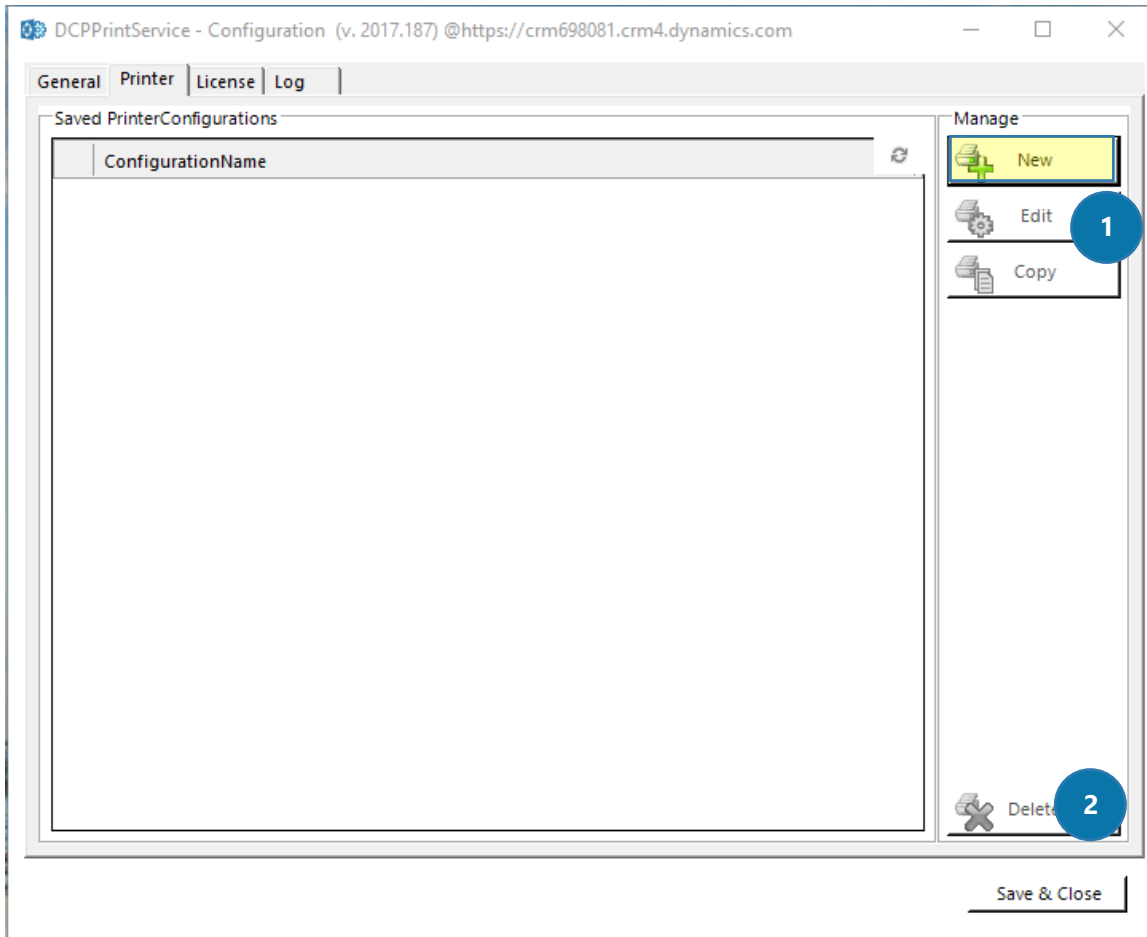
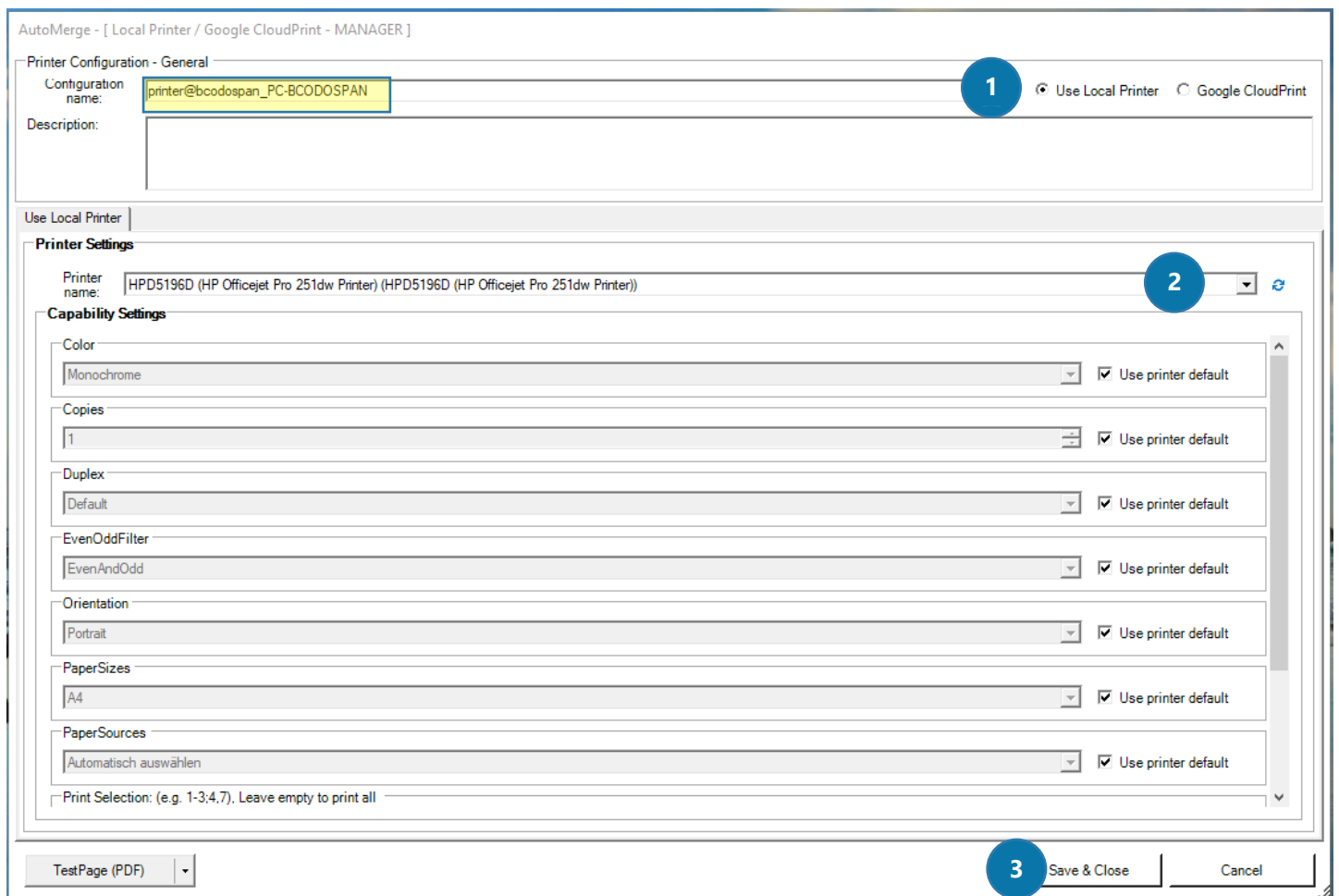


Figure 9: DCPPrintService Printer-tab

In order to create a new configuration, click on the **[New]**-button in the *Printer*-tab, highlighted in yellow.

This action will open the following dialog. Here you have to:

- 1 Specify a configuration name to be able to create a printer configuration. The configuration name (highlighted in yellow below) consists of printer@**username** (the user which has access to the local printer) + **computer name** (the computer on which the service is running)
- 2 Select the printer from the drop-down menu. You can only use the printer created with your user and your machine.
- 3 Hit the **[Save & Close]**-button.



AutoMerge - [ Local Printer / Google CloudPrint - MANAGER ]

Printer Configuration - General

Configuration name: printer@bcodospan\_PC-BCODOSPAN

Description:

Use Local Printer | Google CloudPrint

Printer name: HPD5196D (HP Officejet Pro 251dw Printer) (HPD5196D (HP Officejet Pro 251dw Printer))

Capability Settings

Color: Monochrome [Use printer default]

Copies: 1 [Use printer default]

Duplex: Default [Use printer default]

EvenOddFilter: EvenAndOdd [Use printer default]

Orientation: Portrait [Use printer default]

PaperSizes: A4 [Use printer default]

PaperSources: Automatisch auswählen [Use printer default]

Print Selection: (e.g. 1-3;4,7). Leave empty to print all

TestPage (PDF) Save & Close Cancel

Figure 10: Configure a printer

After saving, you will see the saved printer configuration in the *Printer*-tab.

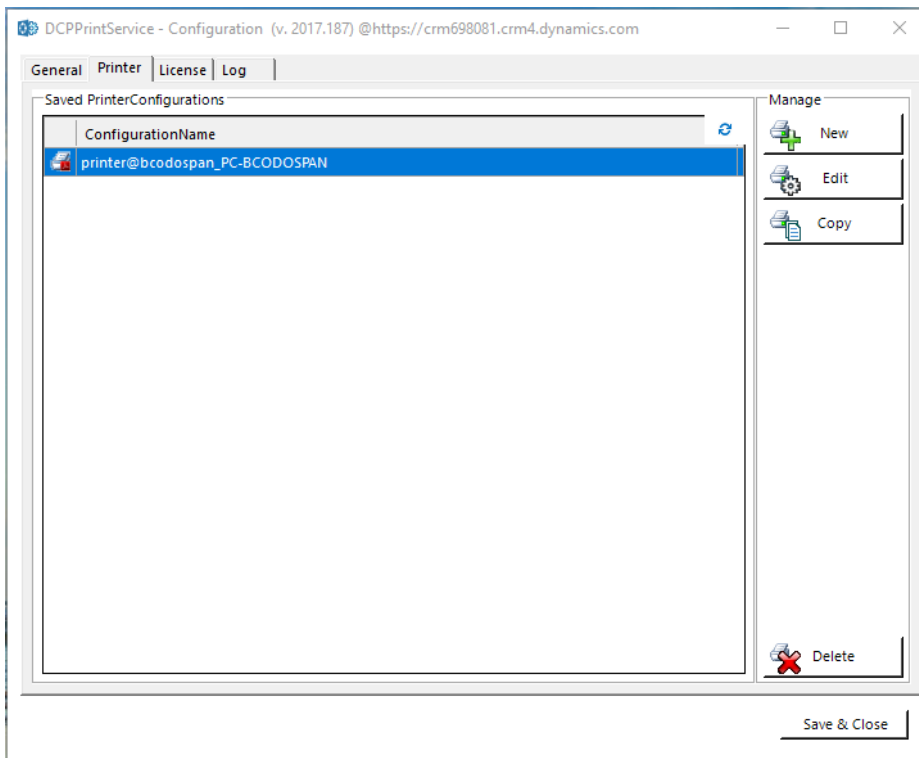


Figure 11: DCPPrintService Printer-tab: Configured printer

The saved printer configuration is also automatically added in the *General*-tab in the Filter-area as you can see in the figure below. To remove a printer, please select it and click on Delete on your keyboard.

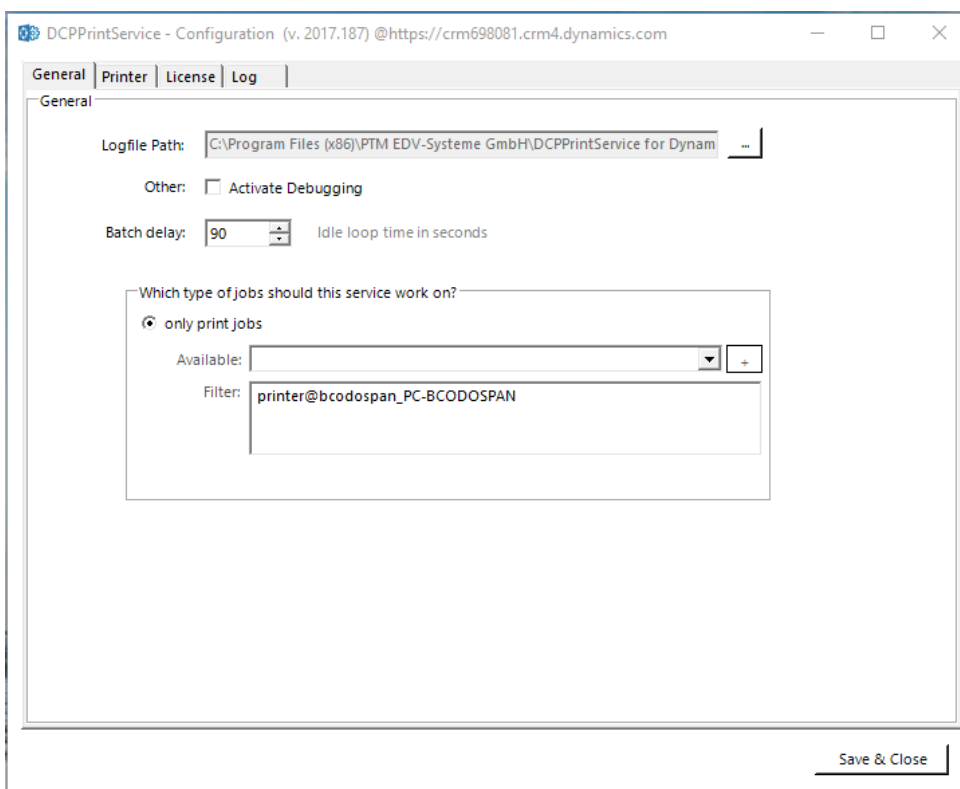


Figure 12: DCPPrintService General-tab: Configured printer

## 2.3 The License-tab

The *License-tab* enables you to quickly check your license state. If the license is invalid, the service will not start. For more information on the license manager, please have a brief look at our [Licensing Guide](#).

## 2.4 The Log-tab

The log provides an excerpt of the DCPPrintService event log, filtered for this specific service. This helps you to identify any issues with the service.

That's it!

Hit the **[Save & Close]**-button in order to finish the DCPPrintService configuration. You will now find the DCPPrintService in your system tray. Right clicking on the icon brings up a context menu, allowing you to connect to a different organization, open the config, restart the service or quit it.

The installer also adds an autorun entry to your local user account, starting the DCP Print service with your windows.

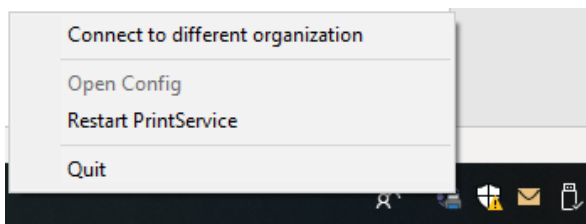


Figure 13: DCPPrintService in the Task Pane

If you now hit the **[Create Document]**-button, the DocumentsCorePack Dialog provides you with the new "Print document"-option, where you are able to select the printer you have configured before (highlighted in yellow).

**Please notice:** You can configure as many local printers as you like.

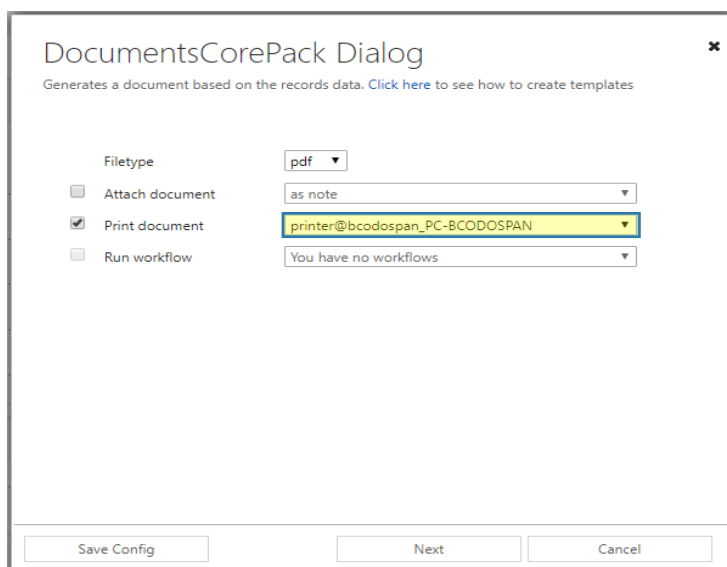


Figure 14: DocumentsCorePack Dialog – Print

### 3 List of figures

- Figure 1: Installer DCPPrintService for Dynamics 365 ..... 4
- Figure 2: End User License Agreement (EULA) ..... 4
- Figure 3: Change installation folder ..... 5
- Figure 4: Confirm the installation ..... 5
- Figure 5: Installation status ..... 6
- Figure 6: Dynamics 365 Connection setup ..... 7
- Figure 7: Finish installation ..... 8
- Figure 8: DCPPrintService Overview-tabs ..... 9
- Figure 9: DCPPrintService Printer-tab ..... 10
- Figure 10: Configure a printer ..... 11
- Figure 11: DCPPrintService Printer-tab: Configured printer ..... 12
- Figure 12: DCPPrintService General-tab: Configured printer ..... 12
- Figure 13: DCPPrintService in the Task Pane ..... 13
- Figure 14: DocumentsCorePack Dialog – Print document ..... 13

## 4 Contact

For further technical questions, please visit our blog <http://blogs.mscrm-addons.com> or contact [support@mscrm-addons.com](mailto:support@mscrm-addons.com).

For sales and licensing questions please contact [office@mscrm-addons.com](mailto:office@mscrm-addons.com) or the corresponding contact information below.



### Headquarter – Europe

PTM EDV-Systeme GmbH  
Bahnhofgürtel 59  
A-8020 Graz  
Austria

Tel Austria +43 316 680-880-0  
Fax +43 316 680-880-25

**Support:**  
7AM - 8PM GMT+1 (Monday-Friday)

**Sales:**  
+43 316 680 880 14  
[sales@mscrm-addons.com](mailto:sales@mscrm-addons.com)

[www.ptm-edv.at](http://www.ptm-edv.at)  
[www.mscrm-addons.com](http://www.mscrm-addons.com)



### Headquarter – US

mscrm-addons.com Corp  
1860 North Rock Springs Rd  
Atlanta, GA 30324  
United States

Tel US +1 404 720 6066

**Support:**  
9AM - 6PM EST (Monday-Friday)

**Sales:**  
+1 404 720 6046  
[ussales@mscrm-addons.com](mailto:ussales@mscrm-addons.com)

[www.mscrm-addons.com](http://www.mscrm-addons.com)